

The image features a complex architectural line drawing of a building complex, rendered in a light grey tone. The drawing is divided into four quadrants by a central vertical bar that is filled with a dark green color. The left and right halves of the drawing are mirrored. The central green bar contains the text 'connect+' in a white, sans-serif font. The drawing shows various building forms, including a prominent structure with a gabled roof and a series of windows, and other rectangular blocks of varying heights and orientations. The overall style is minimalist and technical, typical of architectural visualization.

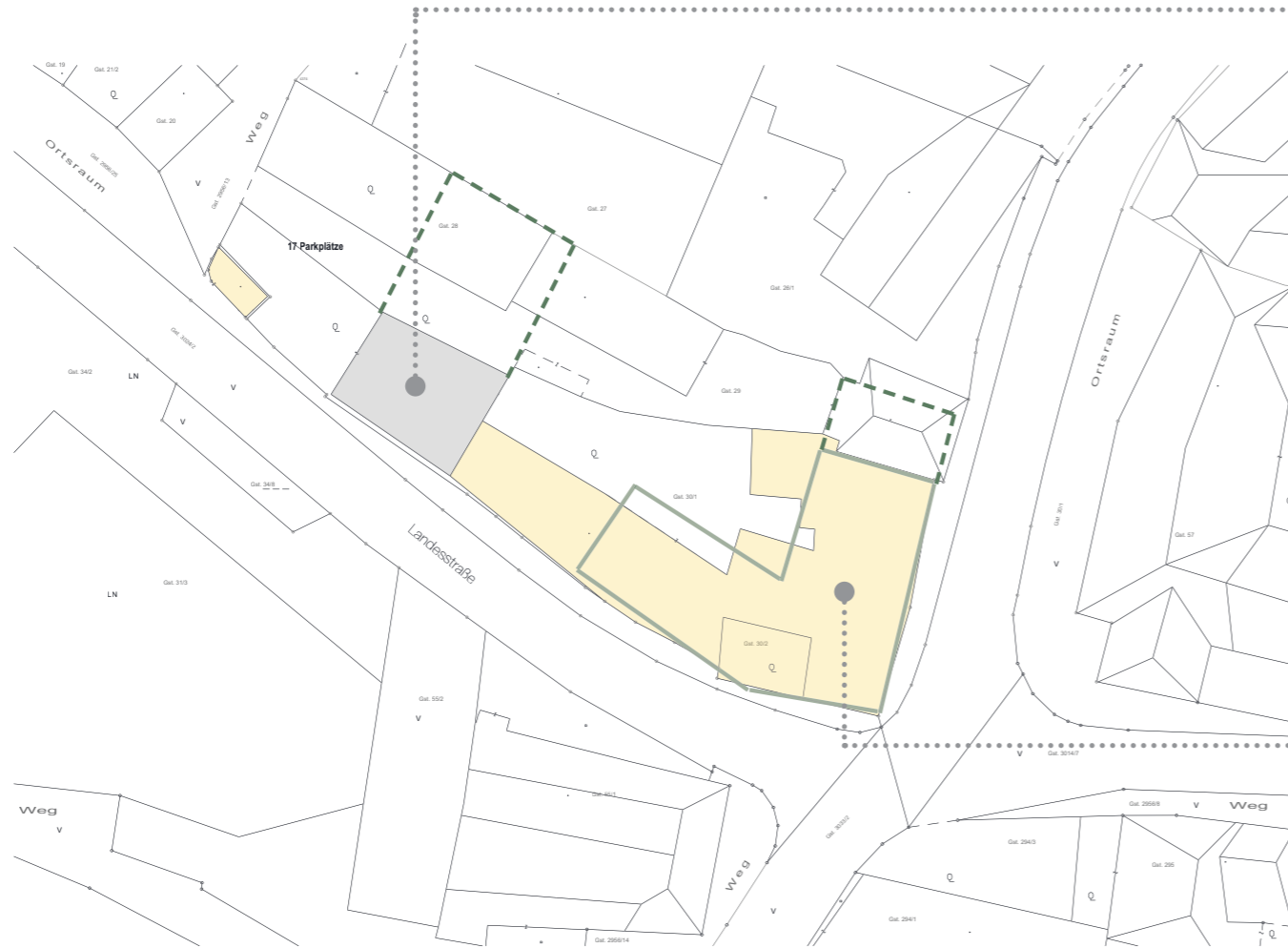
connect+

TU WIEN- SS2021

253.F96 Großes Entwerfen REMIX
Hohenwarth - Mitten drin und doch am Rand

Stefanie Dobler 01325825

ENTWURFSIDEE



BEGEGNUNGSZONE:

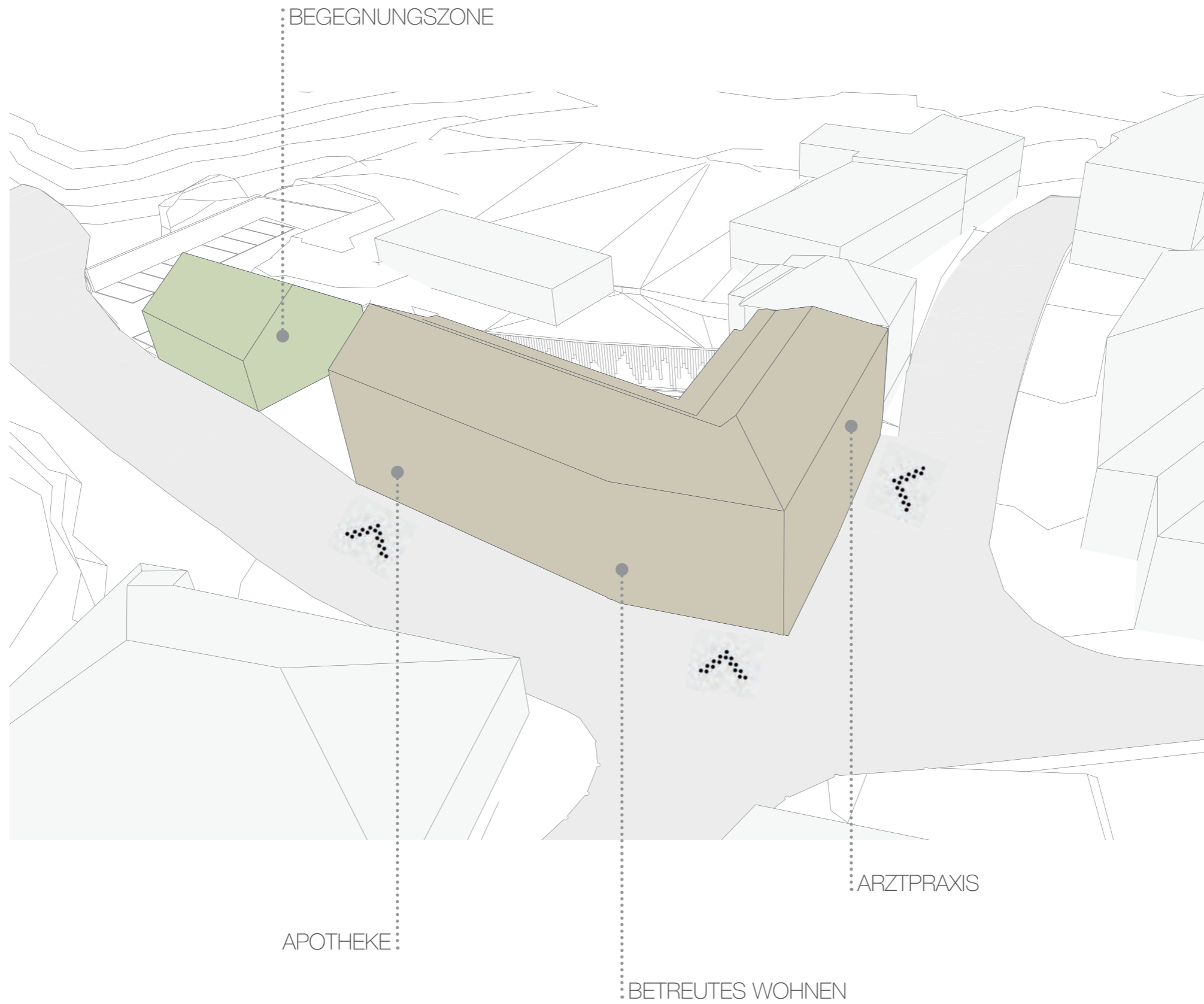
- RÄUMLICHKEITEN FÜR JUGENDLICHE / SENIOREN
- KLEINVERANSTALTUNGEN / MARKT
- ANLAUFSTELLE FÜR TOURIST/INNEN
- HOFLADEN / VERKAUF VON REGIONALEN PRODUKTEN

VERSORGUNGSZENTRUM:

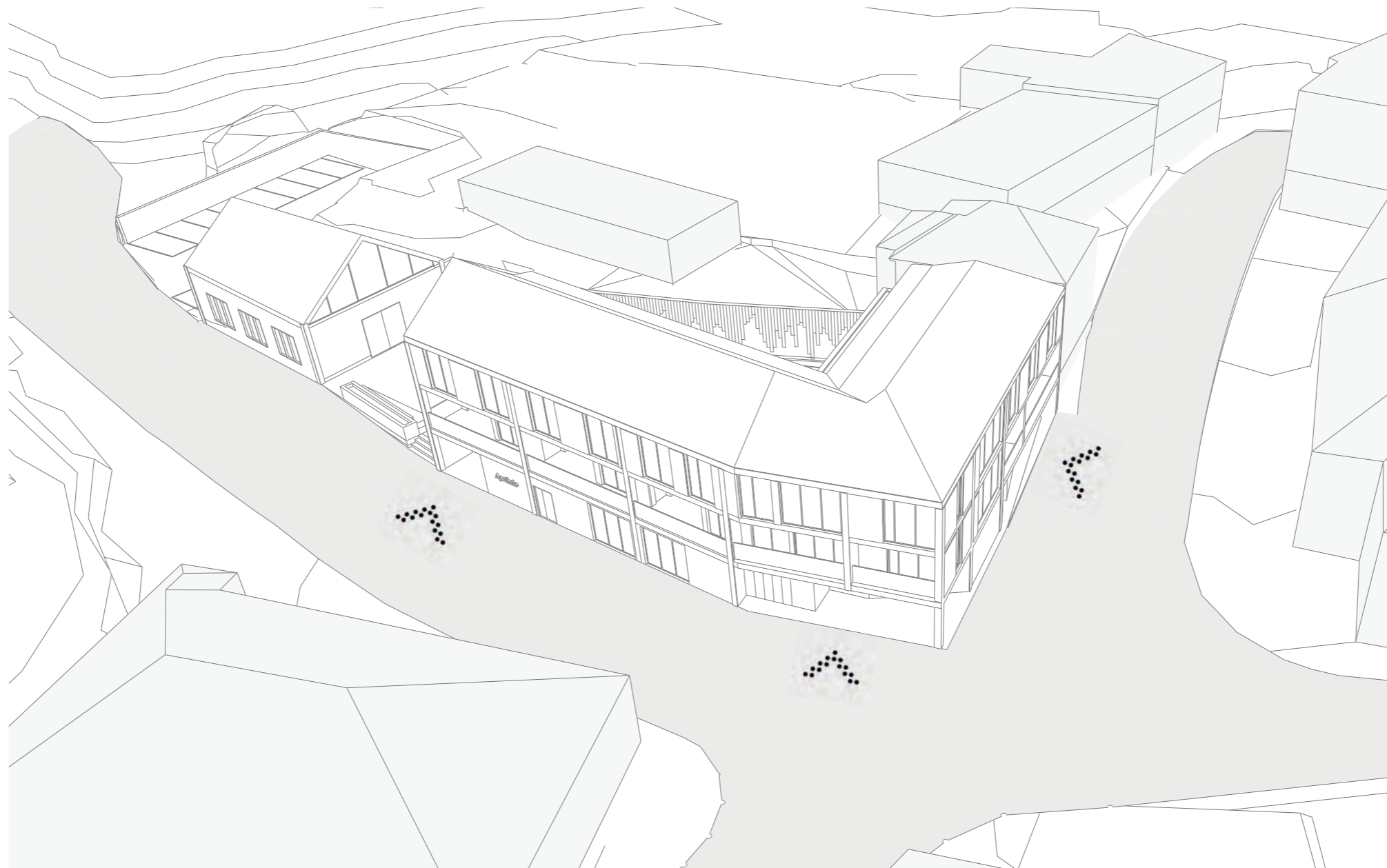
- BETREUTES WOHNEN
- APOTHEKE
- ARZTPRAXIS

- ABBRUCH
- NEUBAUTEN
- MÖGLICHE ERWEITERUNG

KONZEPT



ÜBERSICHT



ERDGESCHOSS & KELLERGESCHOSS

- Begegnungszone
- Apotheke
- Betreutes Wohnen
- Arztpraxis

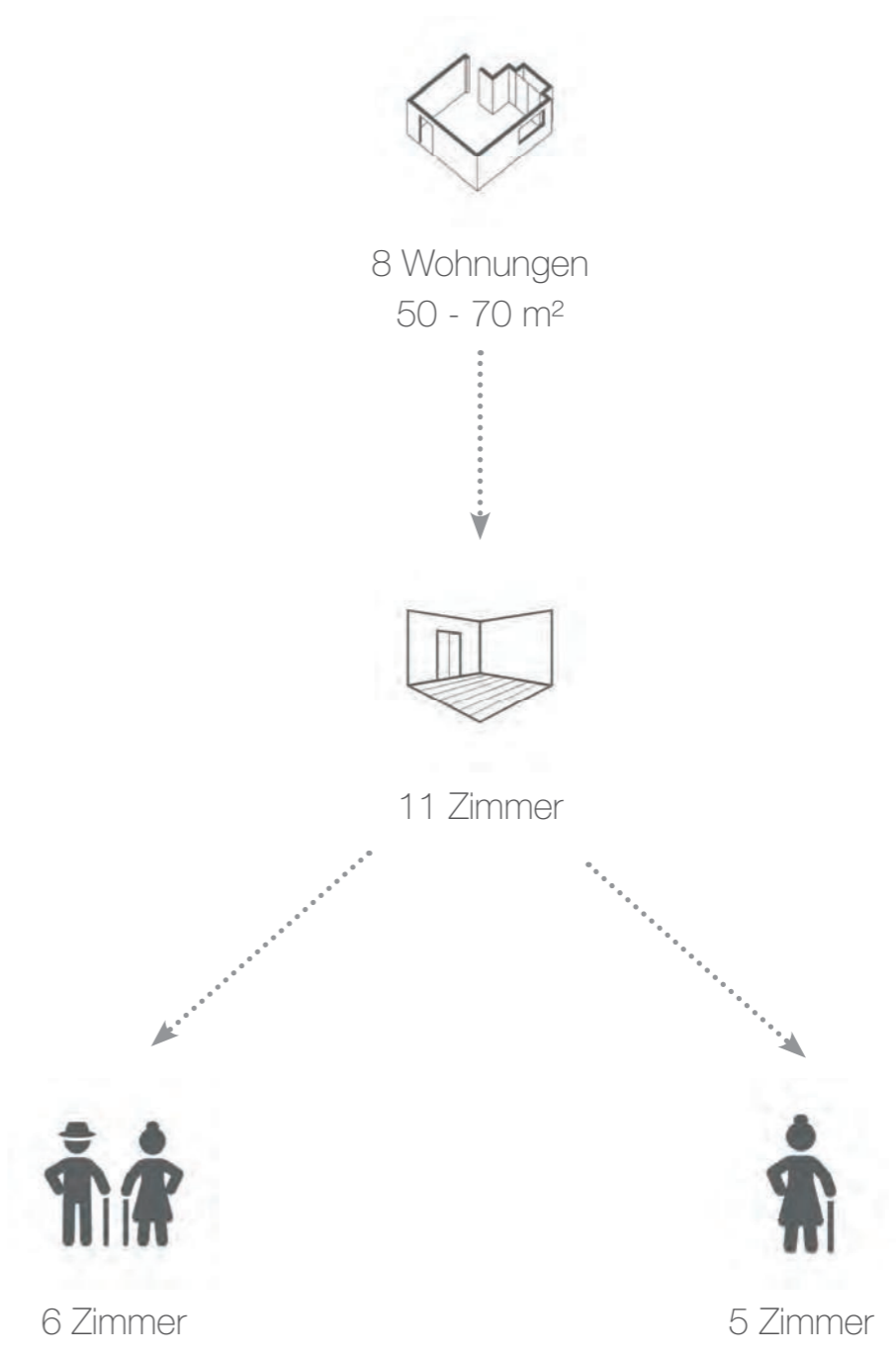


DACHGESCHOSS

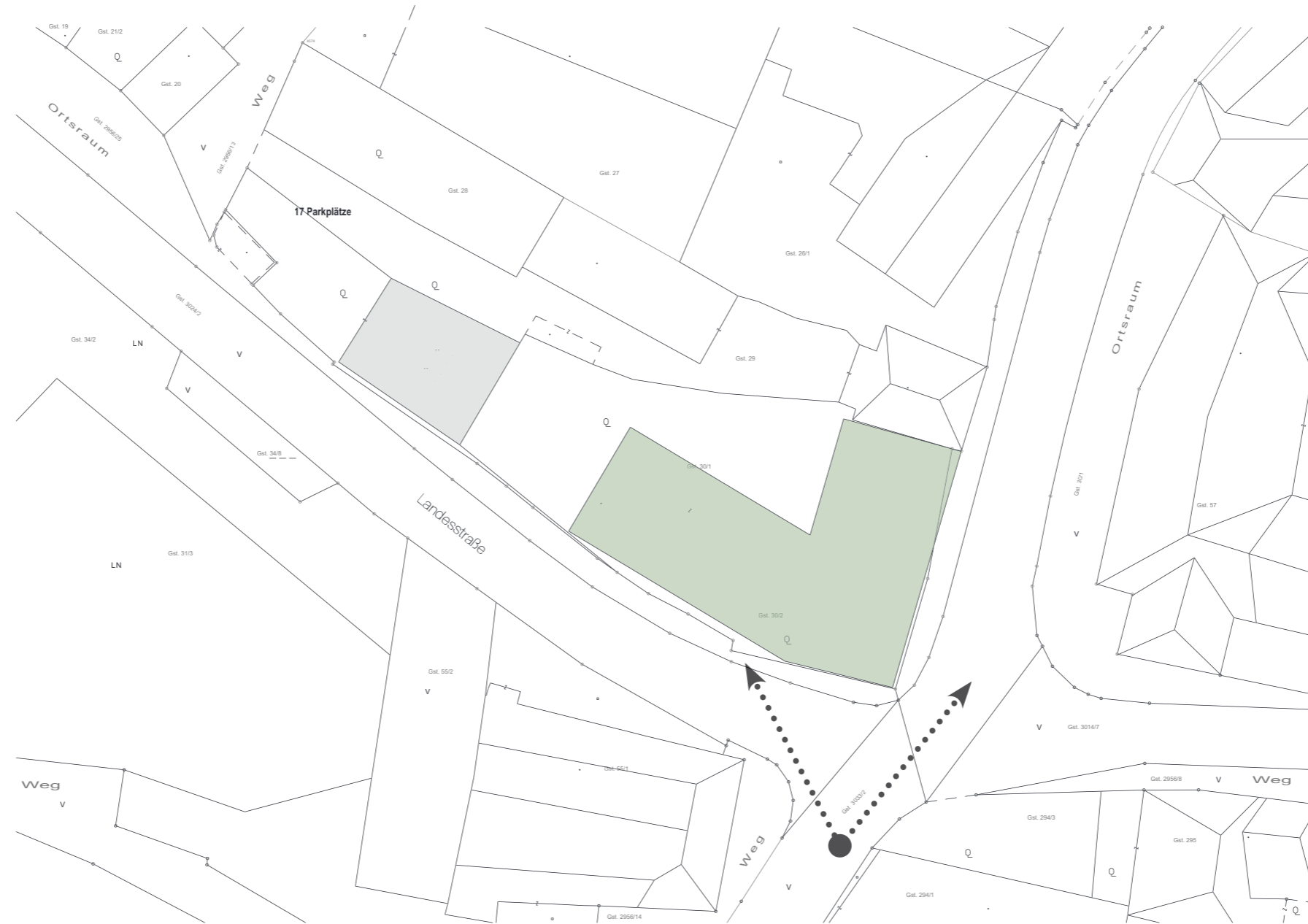
 Betreutes Wohnen



WOHNUNGEN



ÜBERSICHT



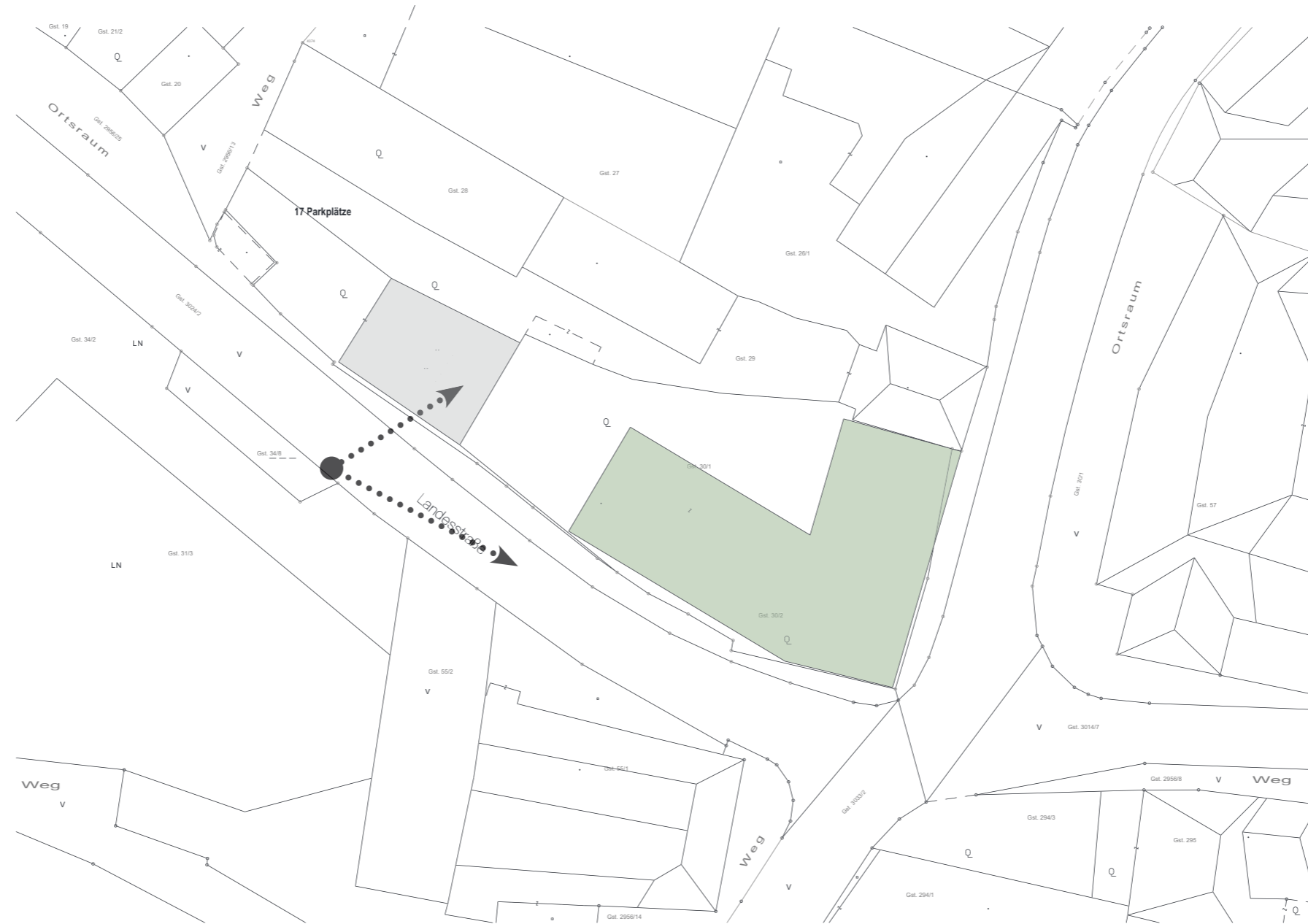
STRASSENANSICHT - SÜD



STRASSENANSICHT - SÜD



ÜBERSICHT



STRASSENANSICHT



ÜBERSICHT

