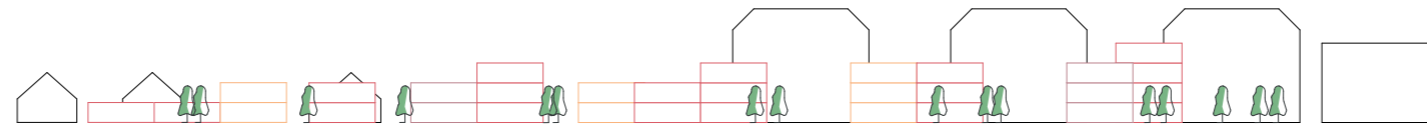
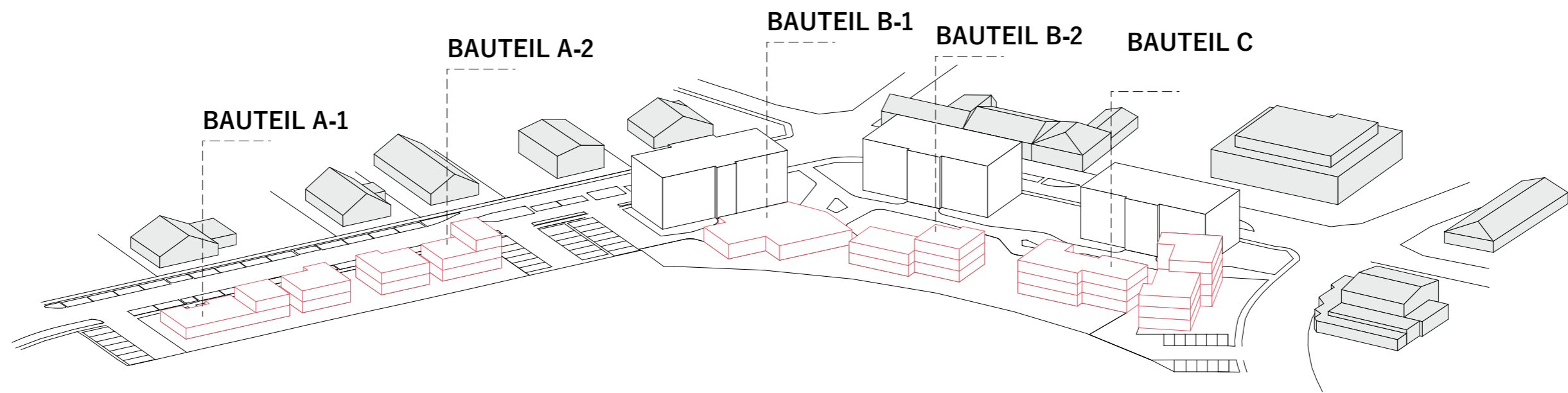


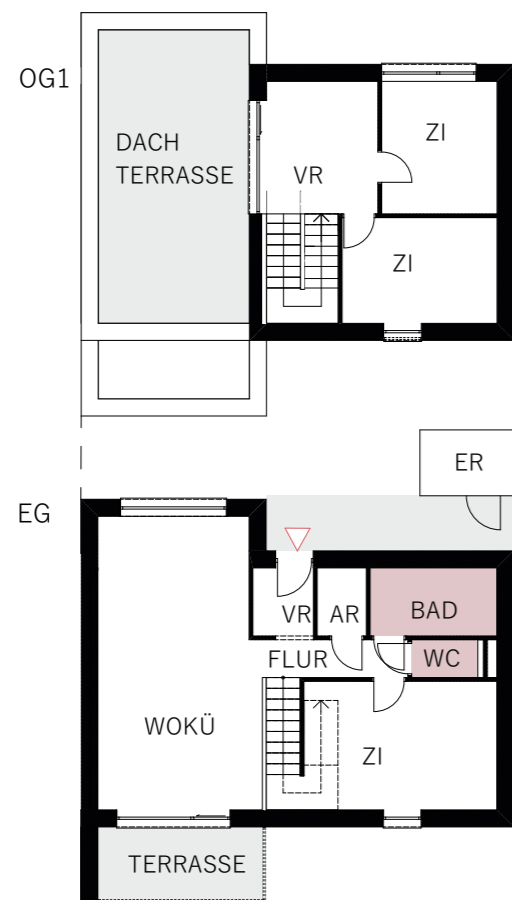
neubau

neue werkshaussiedlung



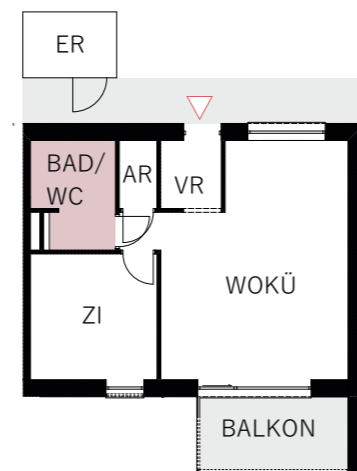
GROSSES ENTWERFEN RE*WORKING Neunkirchen
Institut für Architektur und Entwerfen | WS 19/20
MIRIAM EIBENSTEINER | 01240934



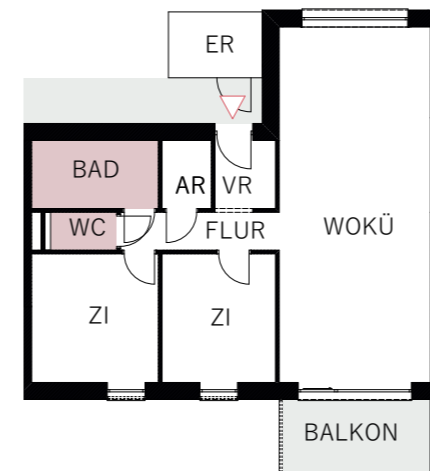


4 Zi WO
Maisonette

SCHEMATISCHER GRUNDRISS M 1:200



2 Zi WO



3 Zi WO

BAUTEIL A-1

TOP 01	56.1 m ²	2 Zi
TOP 02	99.7 m ²	4 Zi
TOP 03 04	56.1 m ²	2 Zi

BAUTEIL A-2

TOP 01 03	56.1 m ²	2 Zi
TOP 02	70.0 m ²	3 Zi
TOP 04	105.3 m ²	4 Zi

BAUTEIL B-1

TREFFPUNKT
156.0 m²

BAUTEIL B-2

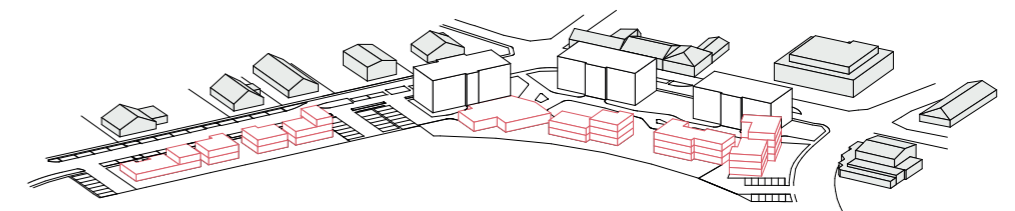
TOP 01 03	64.2 m ²	3 Zi
TOP 02 04 03	55.0 m ²	2 Zi

BAUTEIL C

TOP 01 04 08	69.9 m ²	3 Zi
TOP 02 05 09 12	76.5 m ²	3 Zi
TOP 06 10	51.2 m ²	2 Zi
TOP 03 07 01	71.2 m ²	3 Zi

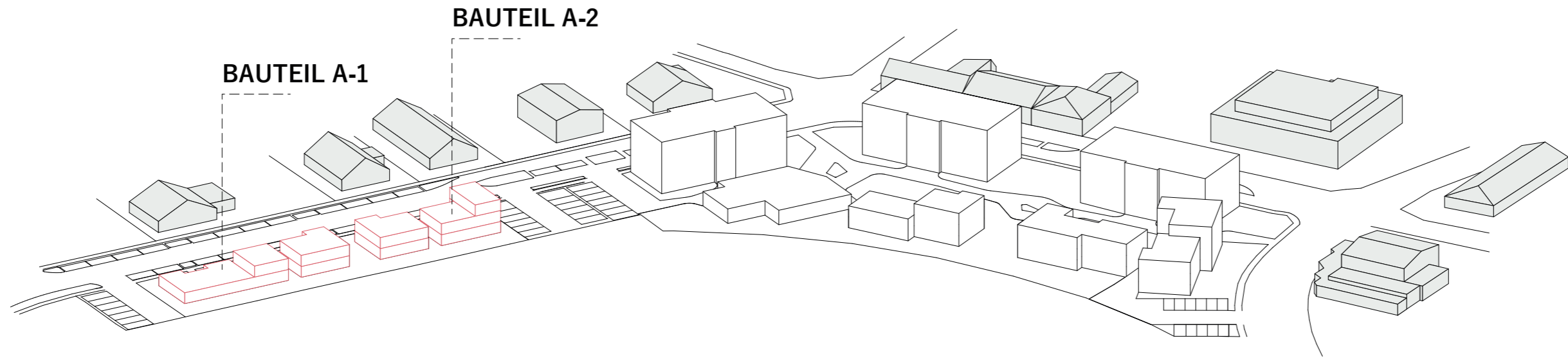
Alle Wohnungen sind barrierefrei zugänglich über den Lift und barrierefrei anpassbar.

Jede Wohnung verfügt über einen Einlagerungsraum in der Erschließungszone im Außenbereich.



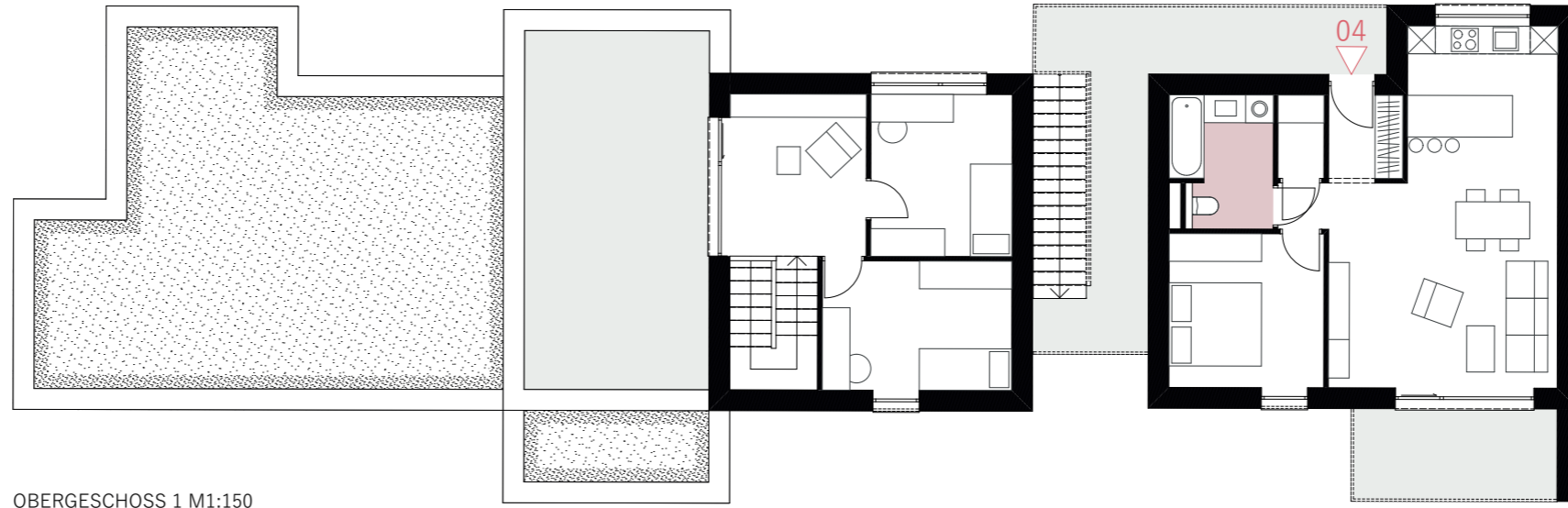


[WOHNUNG BALKON MIT INNENRAUM]

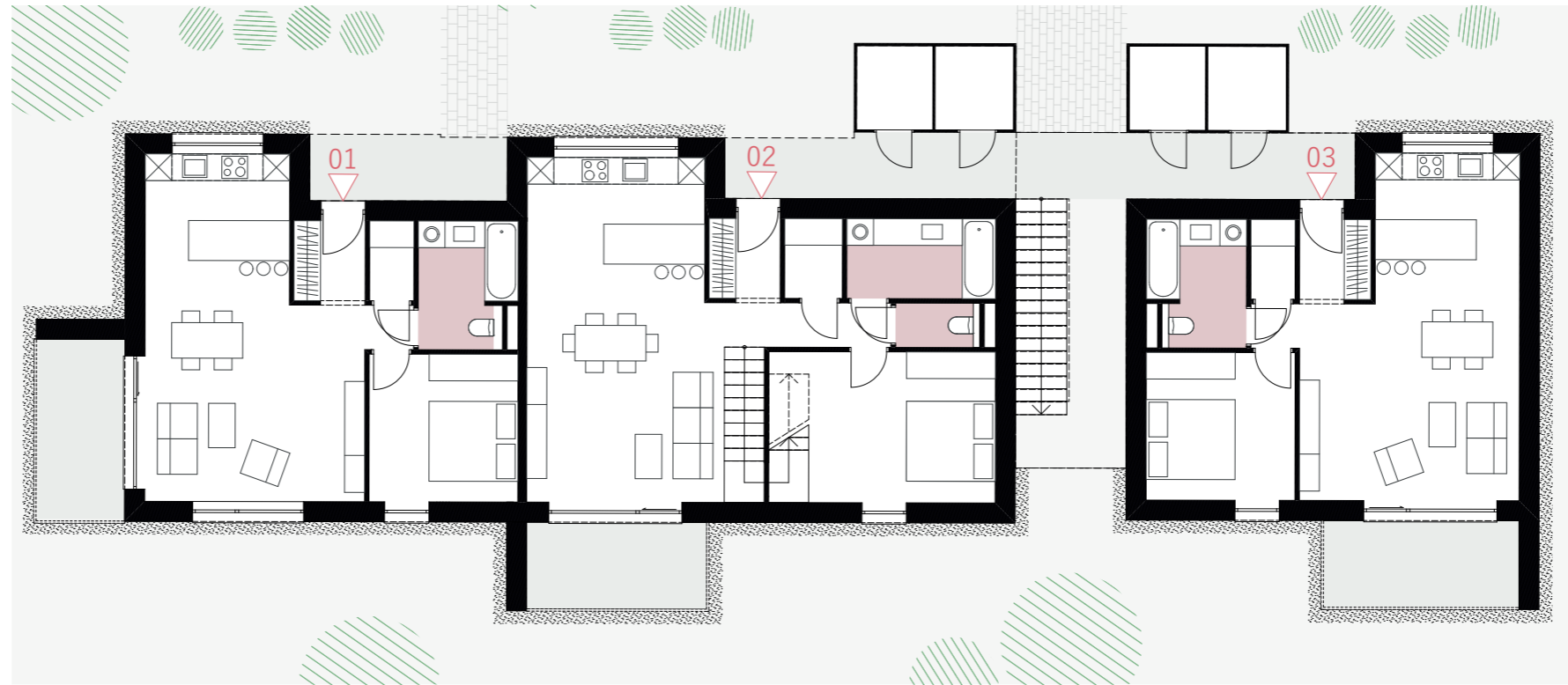


bauteil a

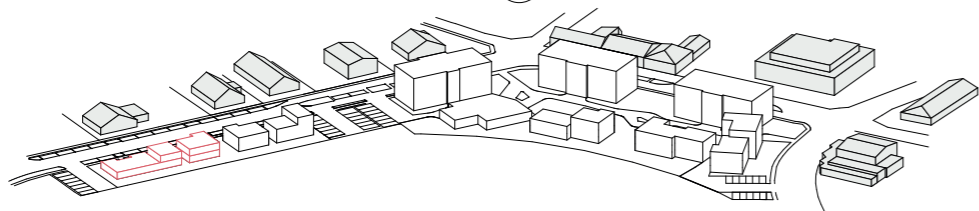
NEUBAU

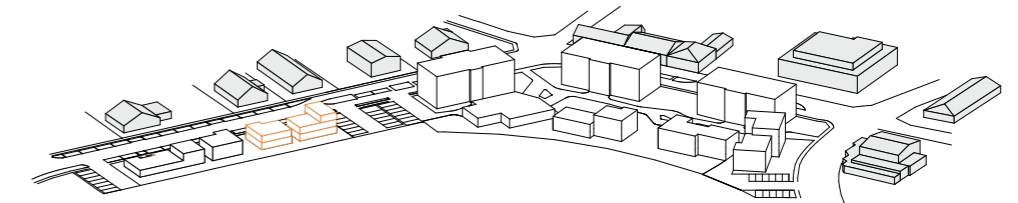
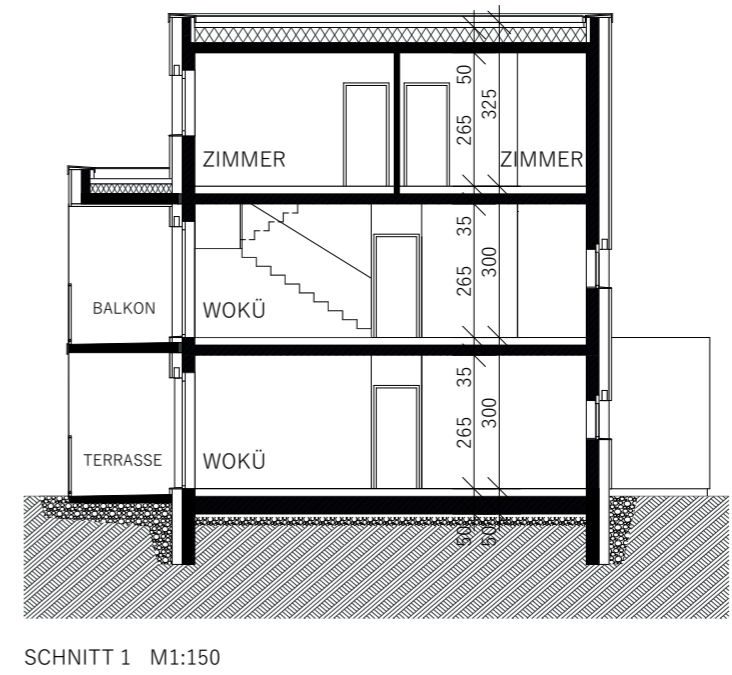
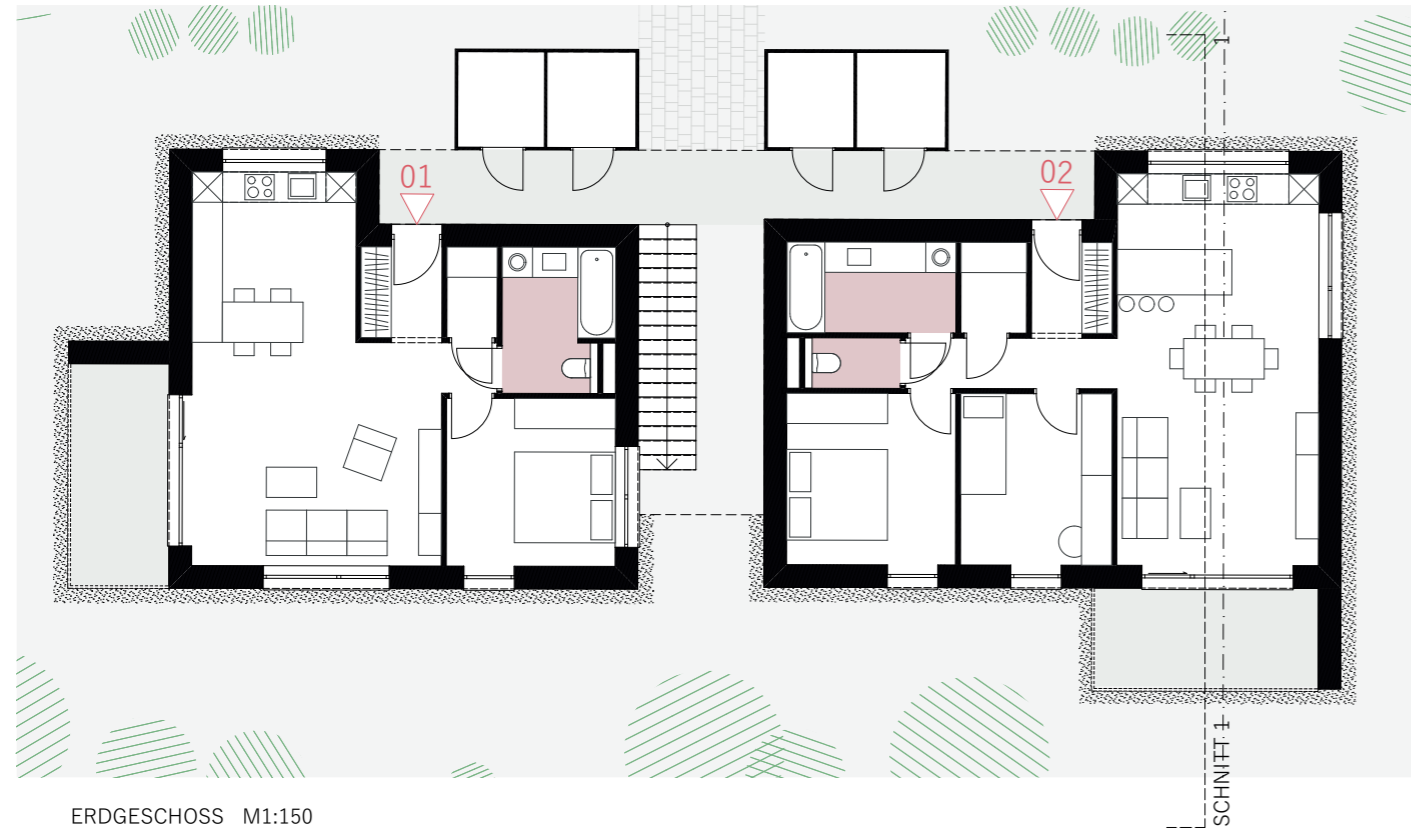
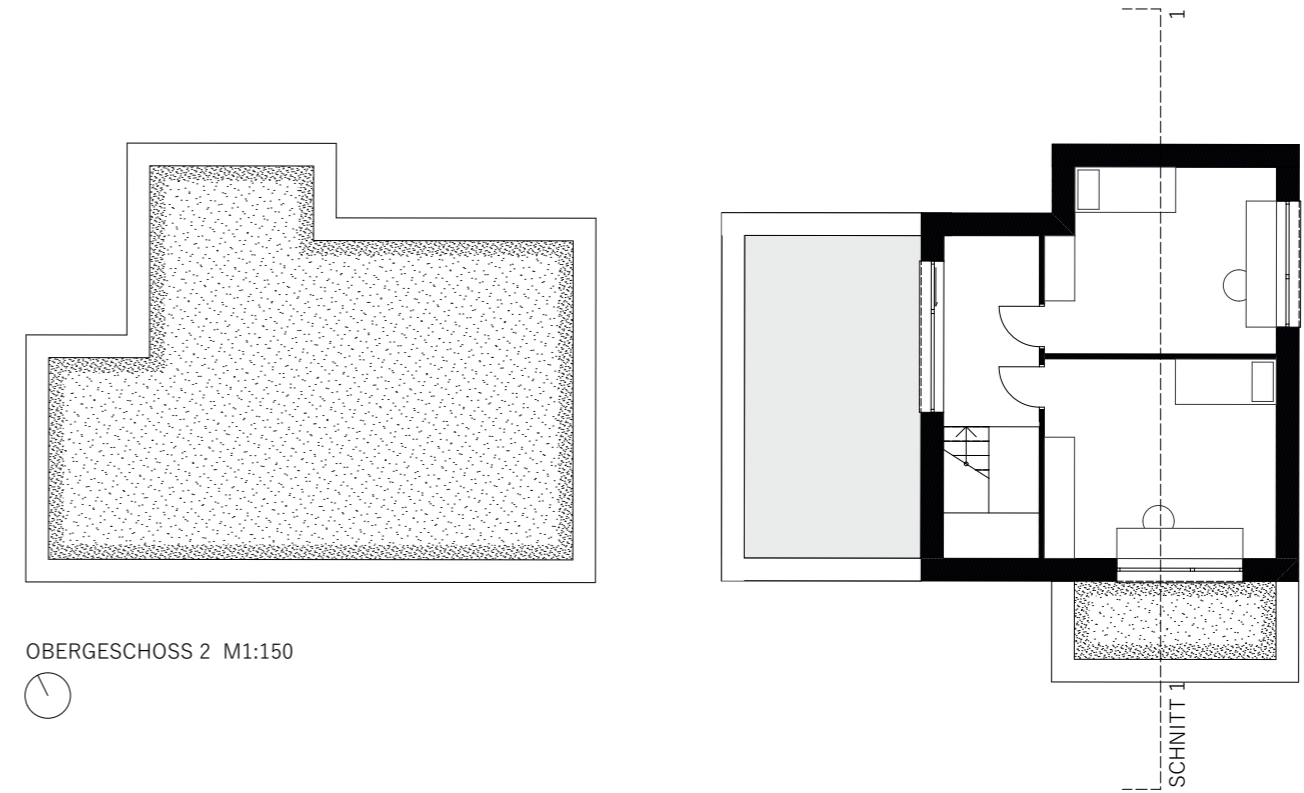
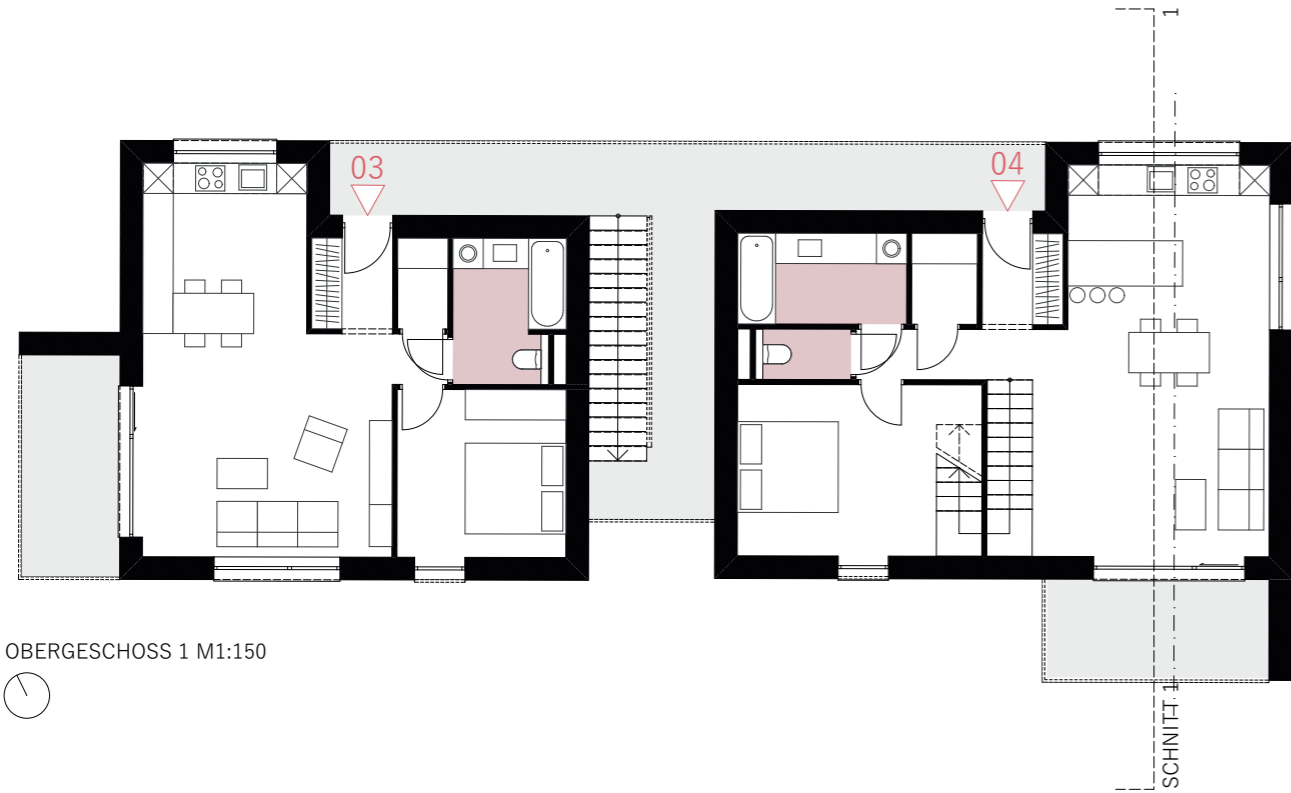


OBERGESCHOSS 1 M1:150



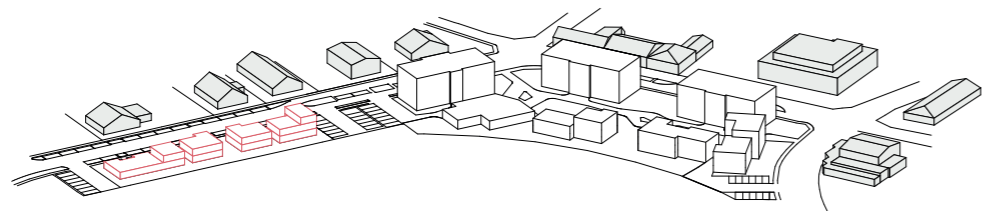
ERDGESCHOSS M1:150





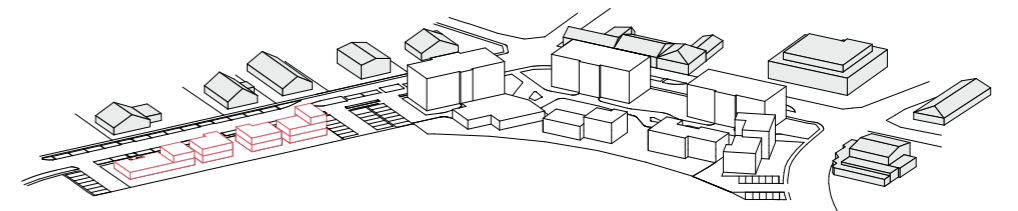


ANSICHT NORDWEST M1:200
[Werksgasse]



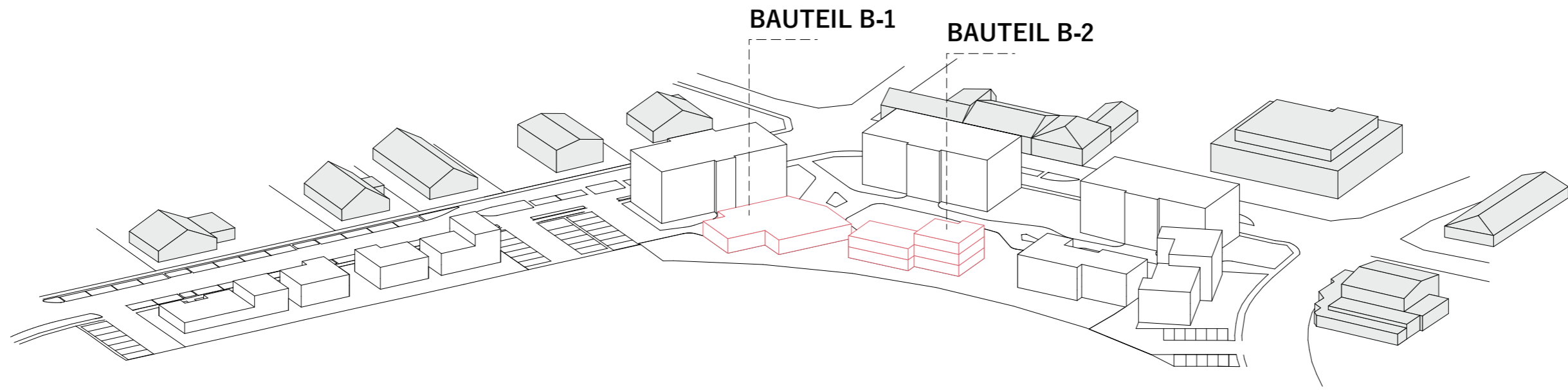


ANSICHT SÜDWEST M1:200
[Grünstreifen]





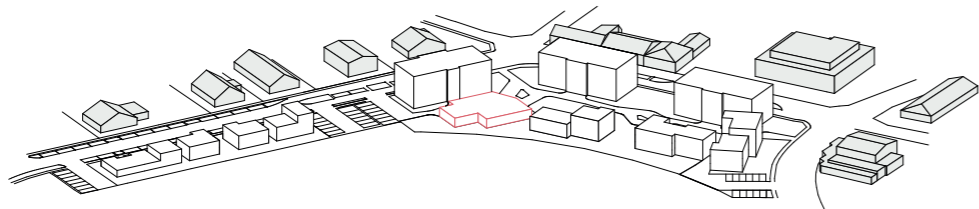
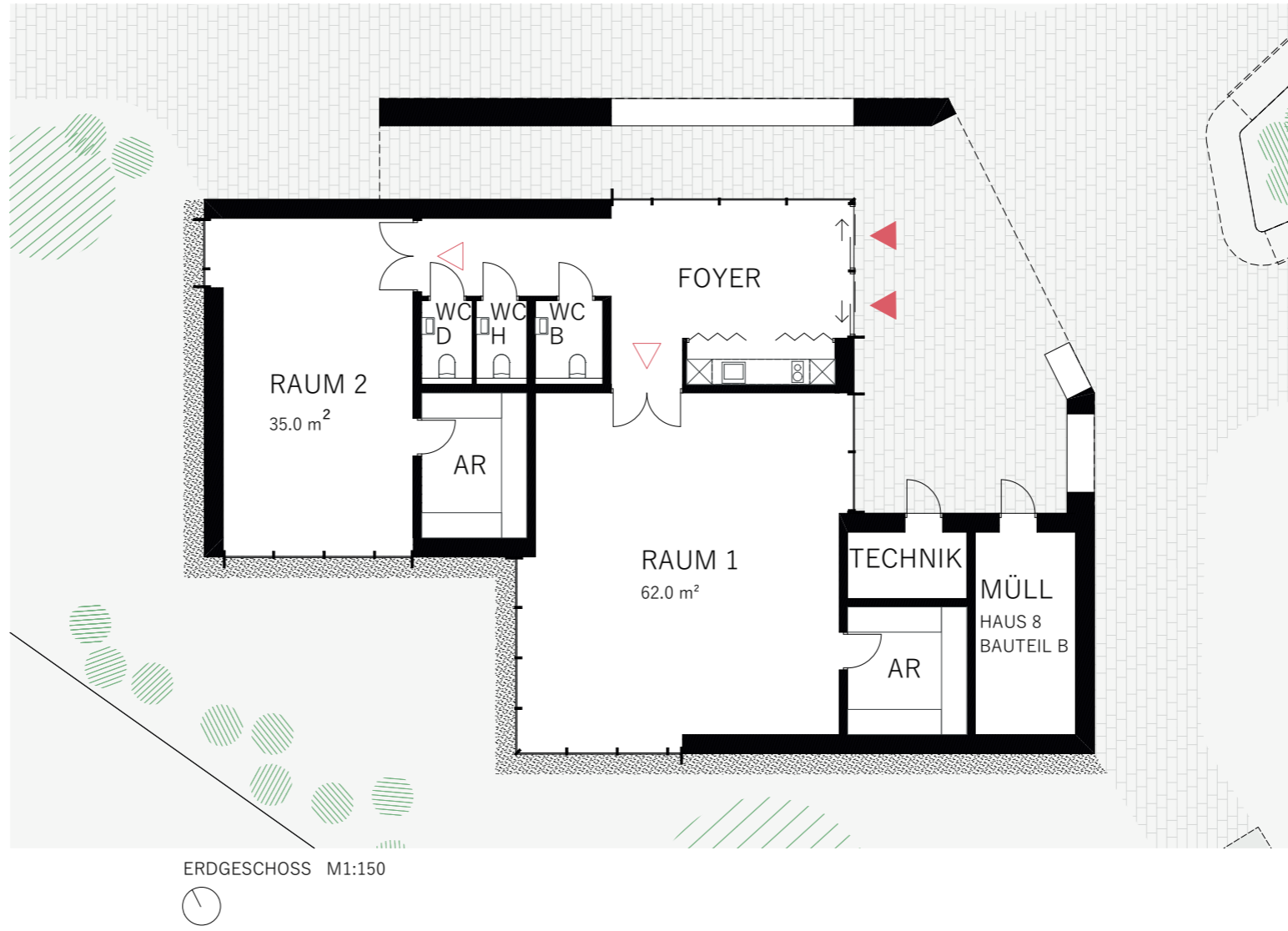
[BAUTEIL A-2]



bauteil b

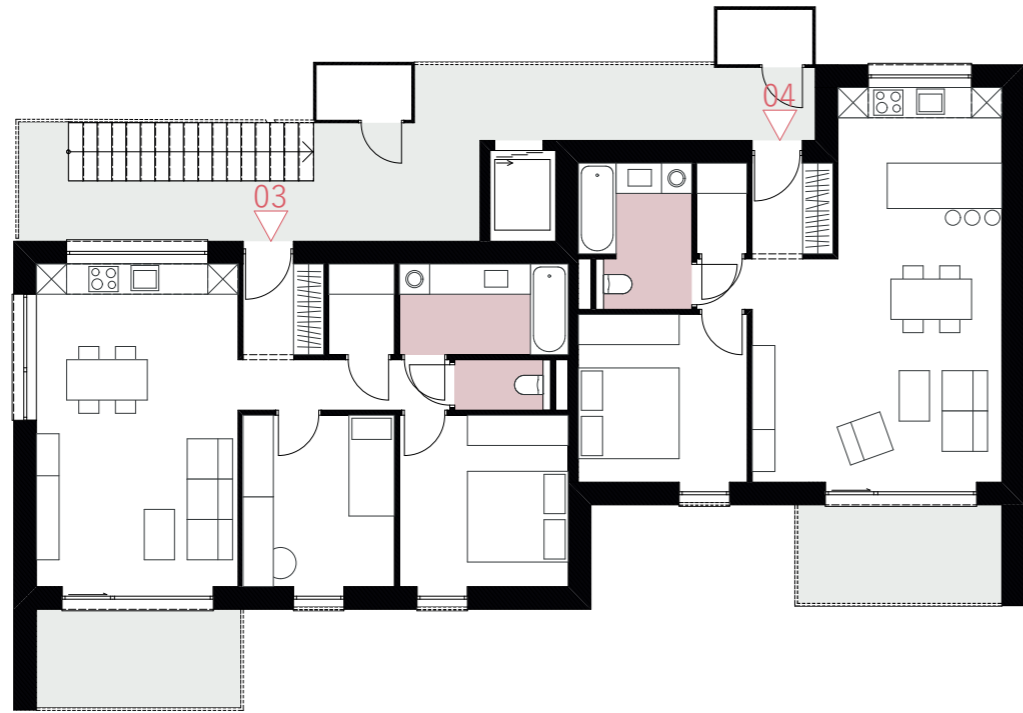
NEUBAU

treffpunkt

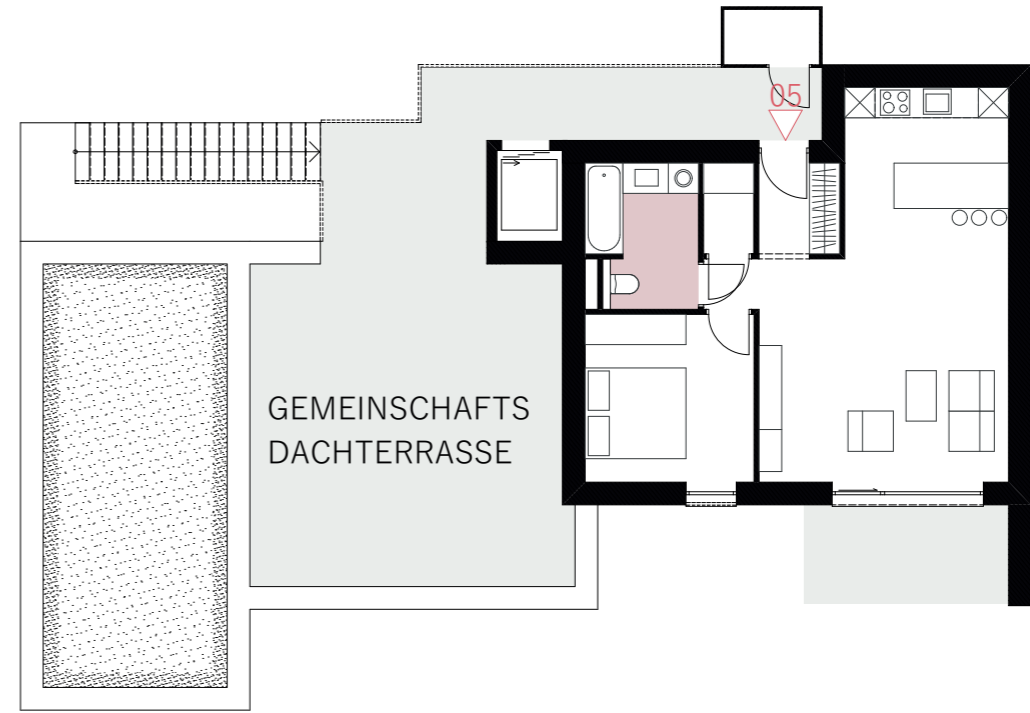




[BAUTEIL B-1 TREFFPUNKT]



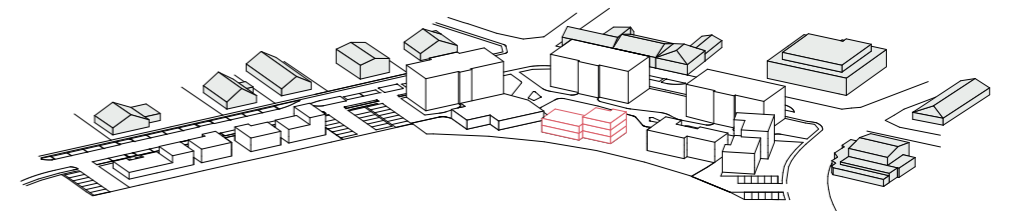
OBERGESCHOSS 1 M1:150

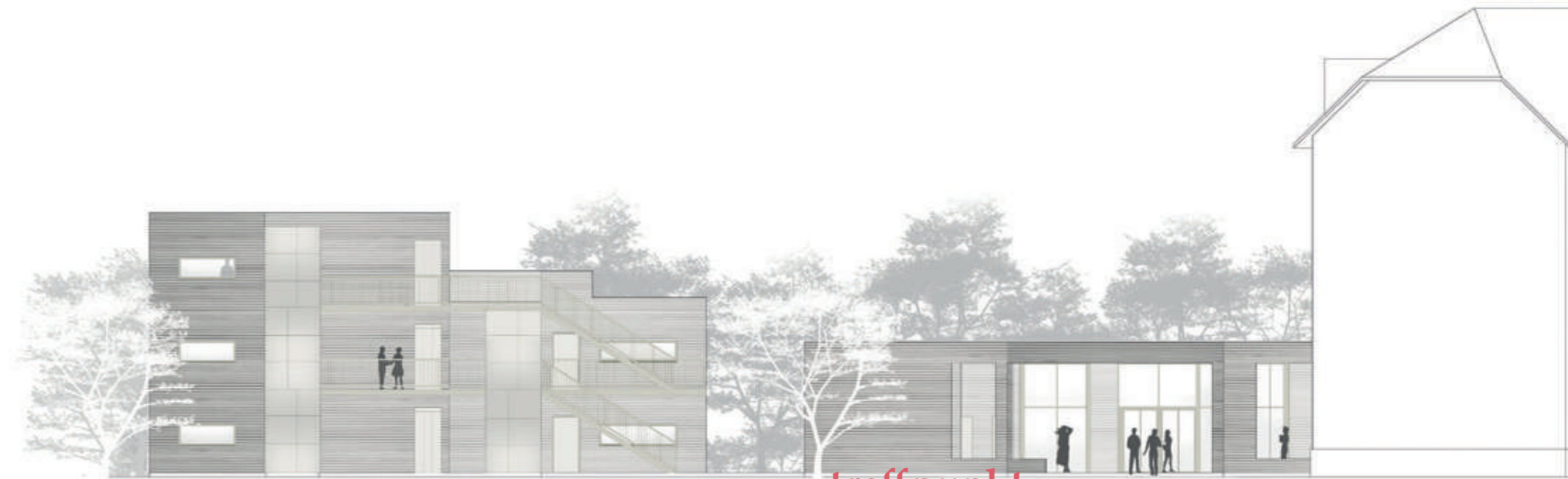


OBERGESCHOSS 2 M1:150



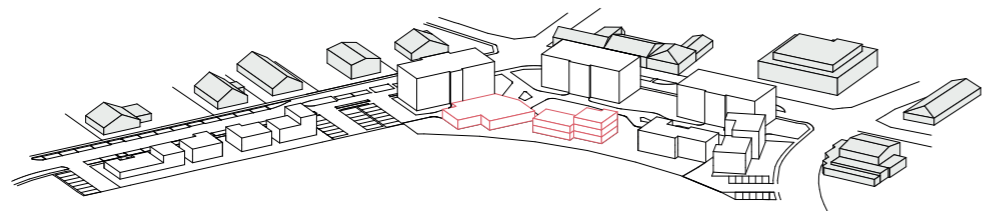
ERDGESCHOSS M1:150

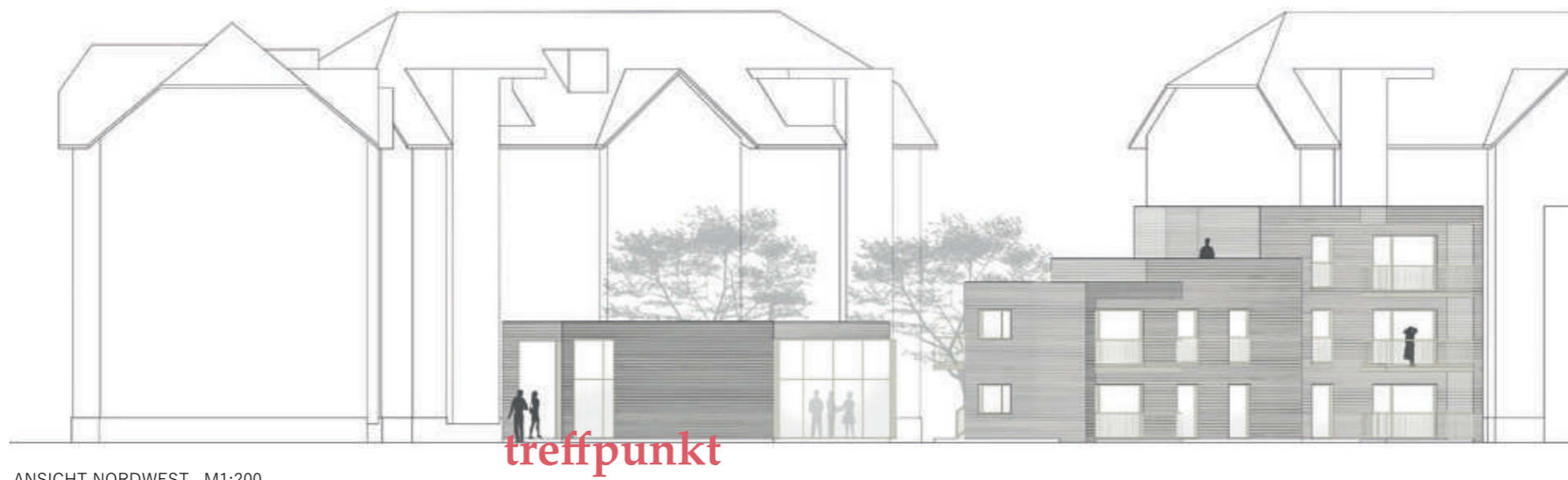




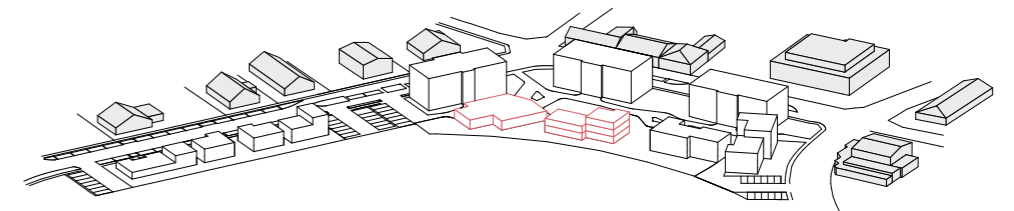
ANSICHT WEST M1:200

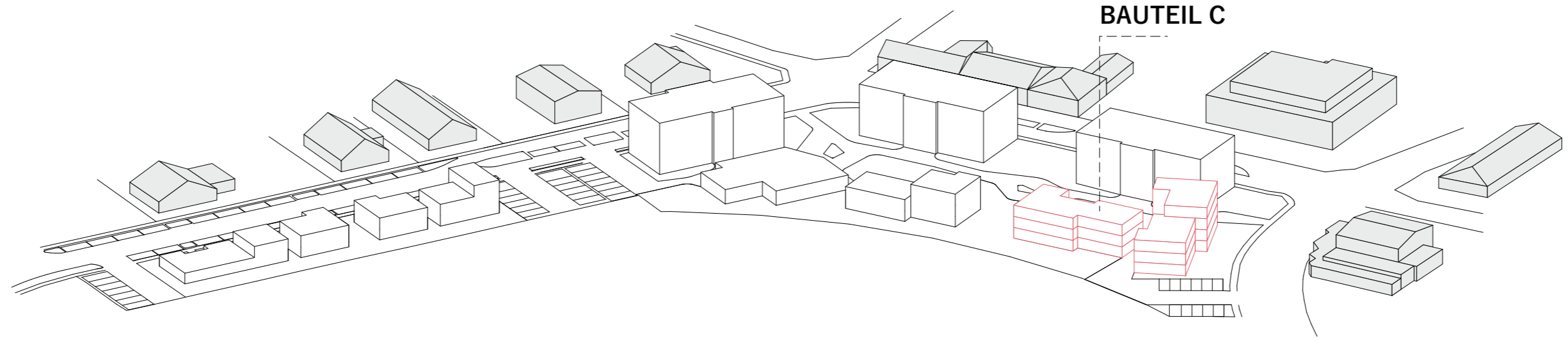
treffpunkt





ANSICHT NORDWEST M1:200



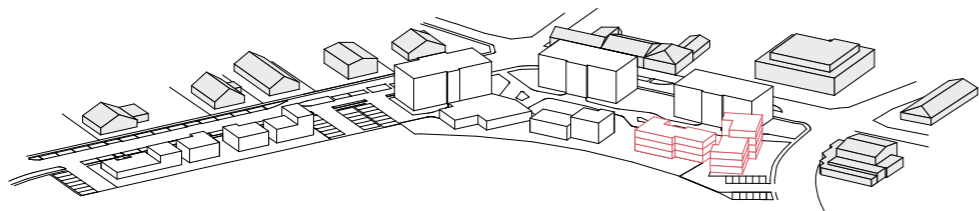


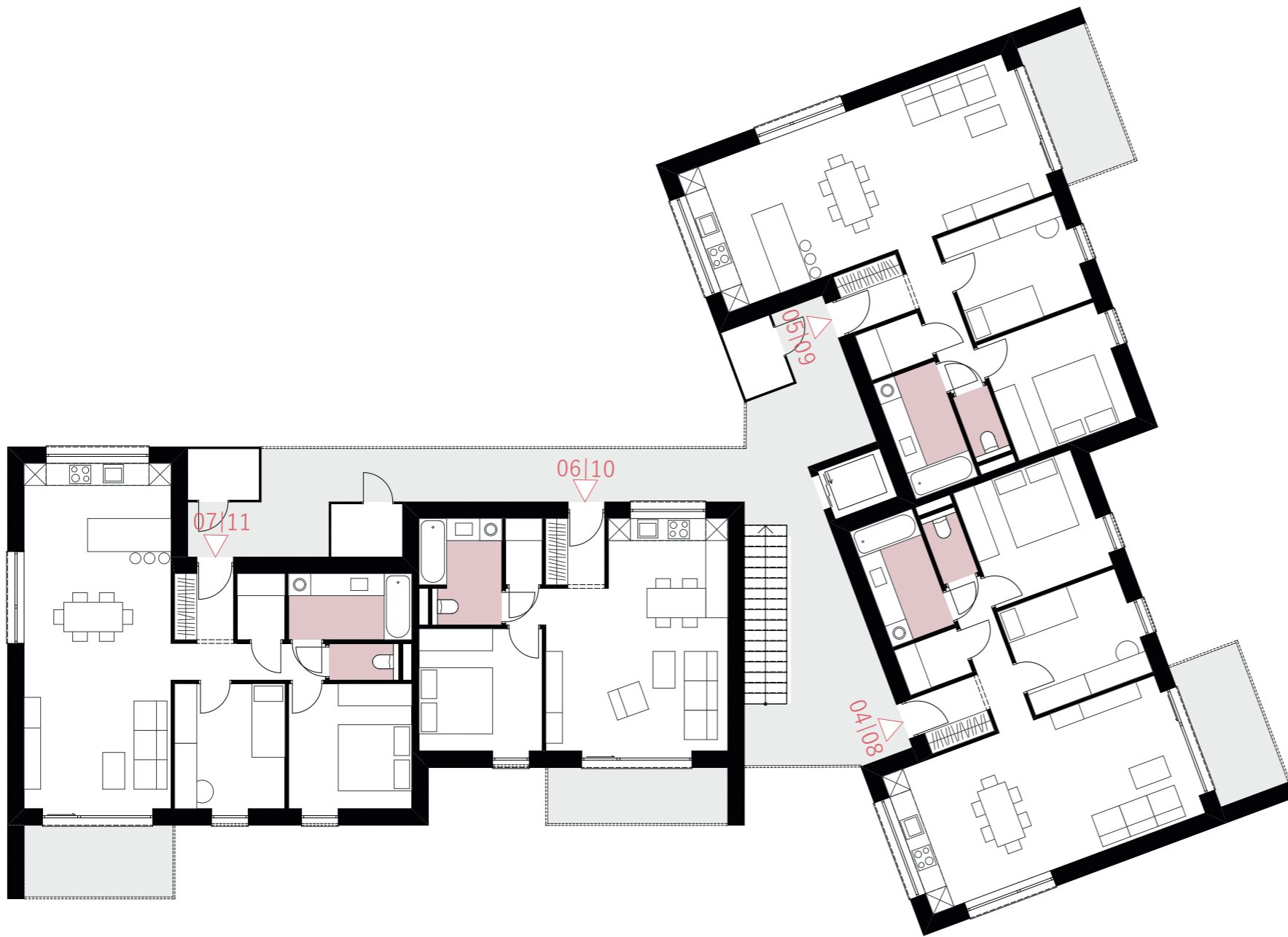
bauteil c

NEUBAU

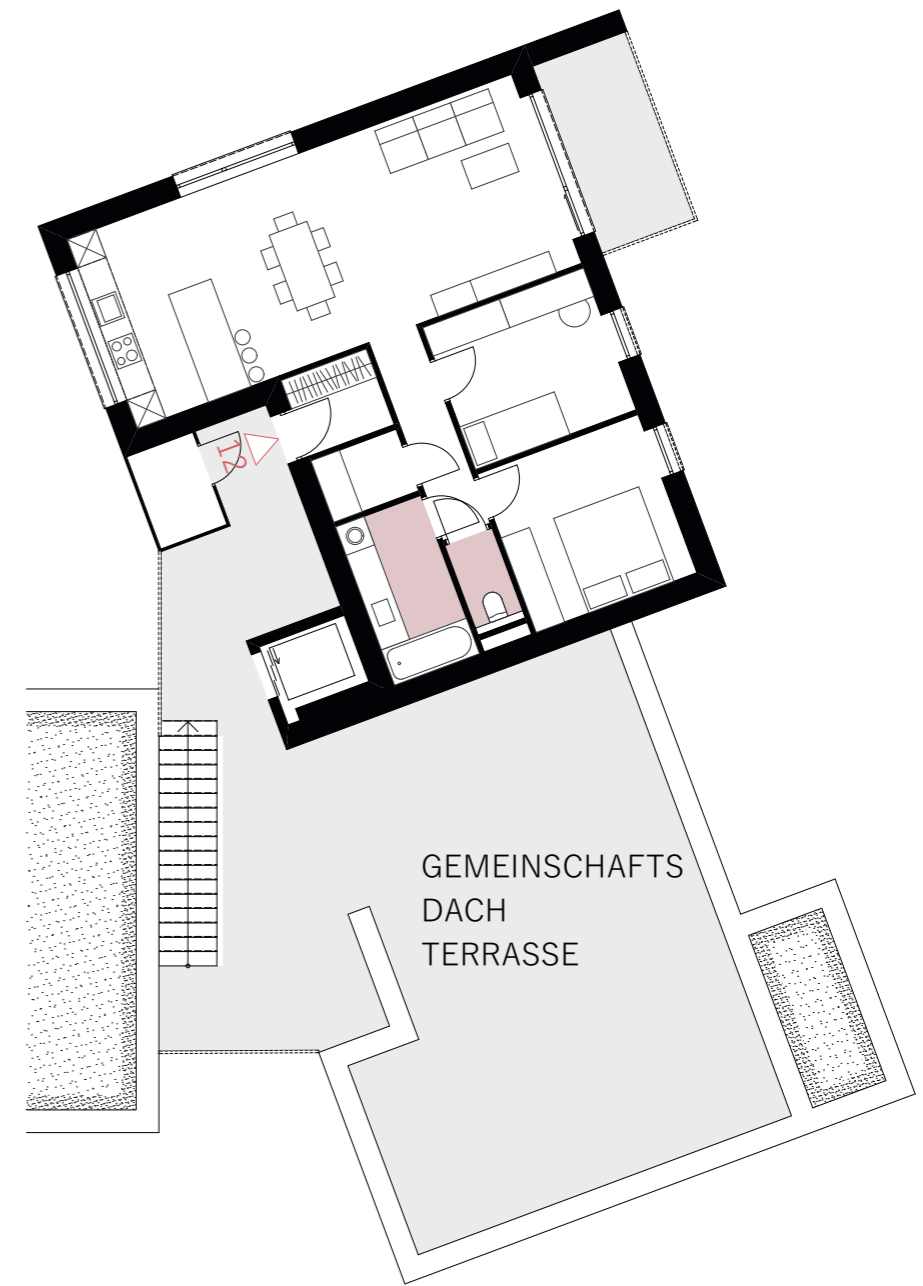


ERDGESCHOSS M1:150

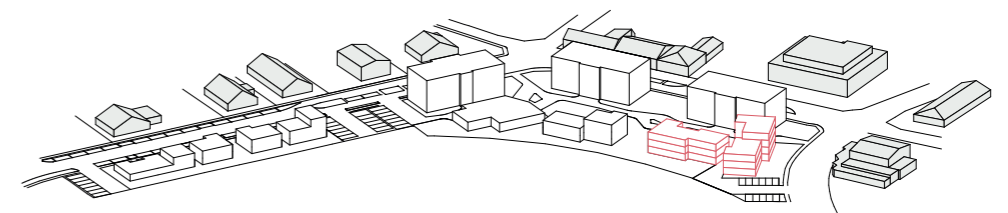




OBERGESCHOSS 1 und 2 M1:150

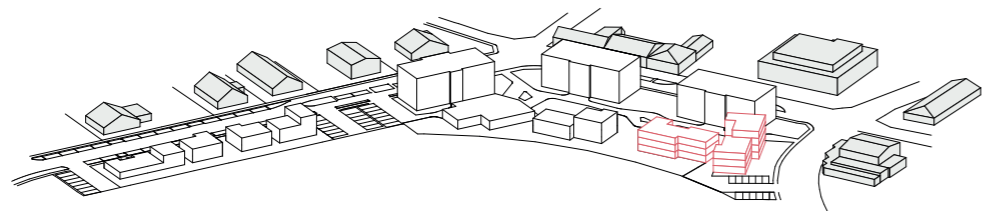


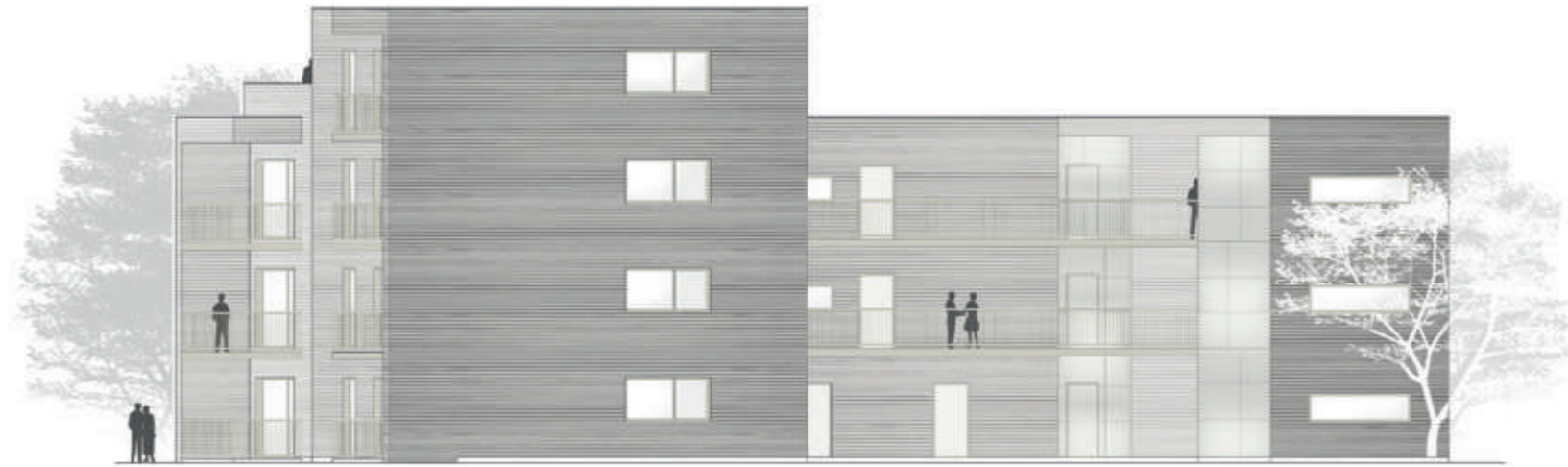
DACHGESCHOSS M1:150





ANSICHT WEST M1:200

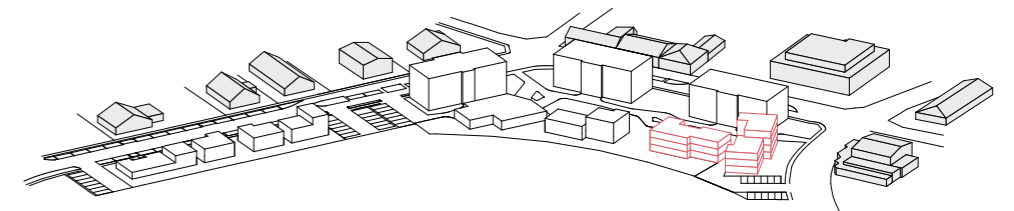




ANSICHT OST M1:200



ANSICHT SÜDWEST M1:200





[BAUTEIL C]