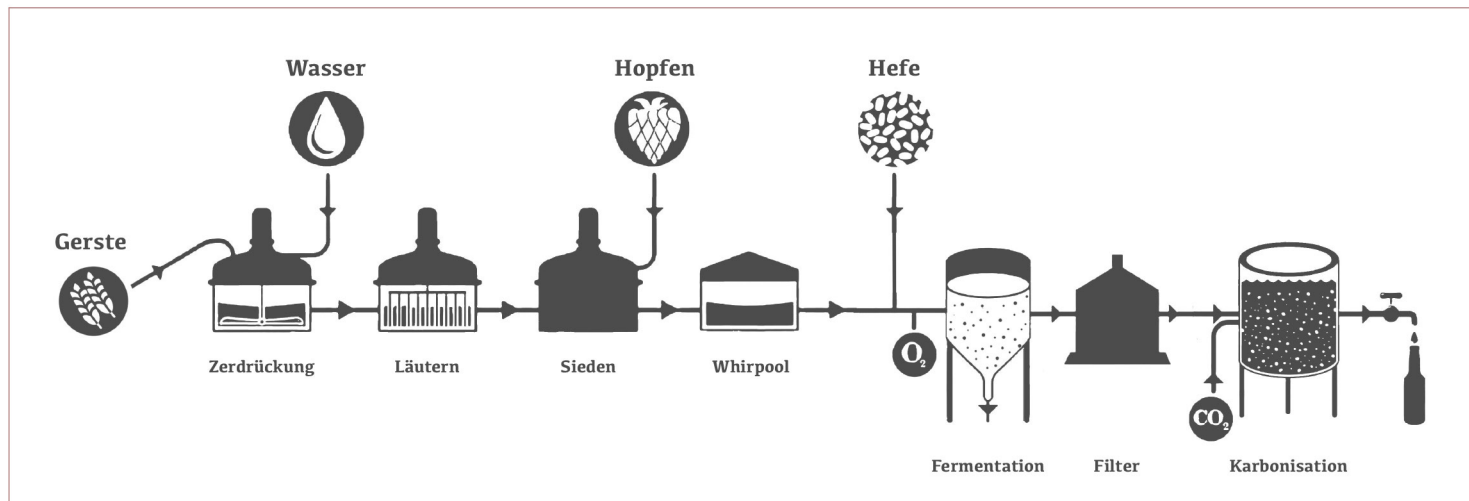
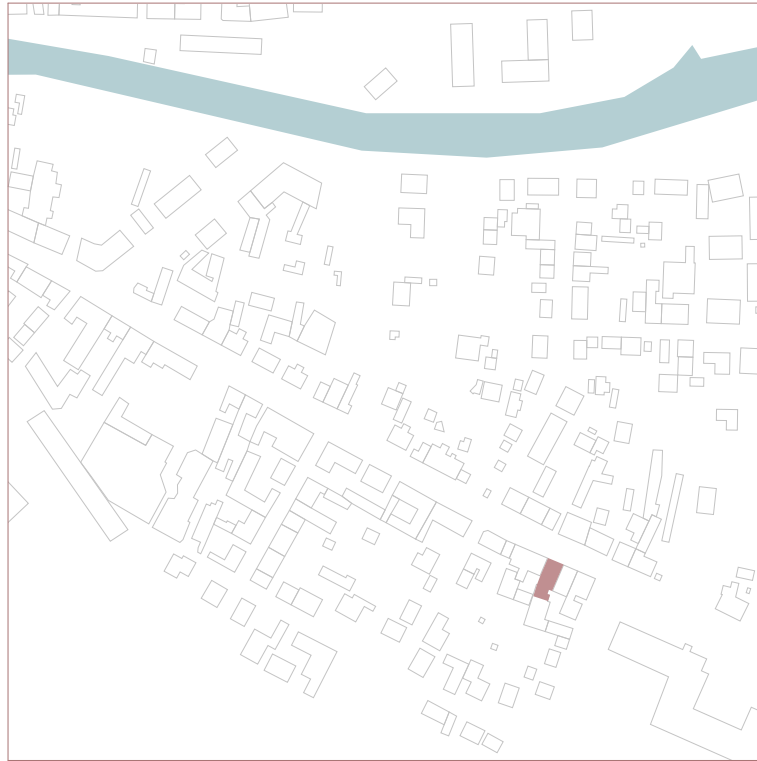


glogg bräu

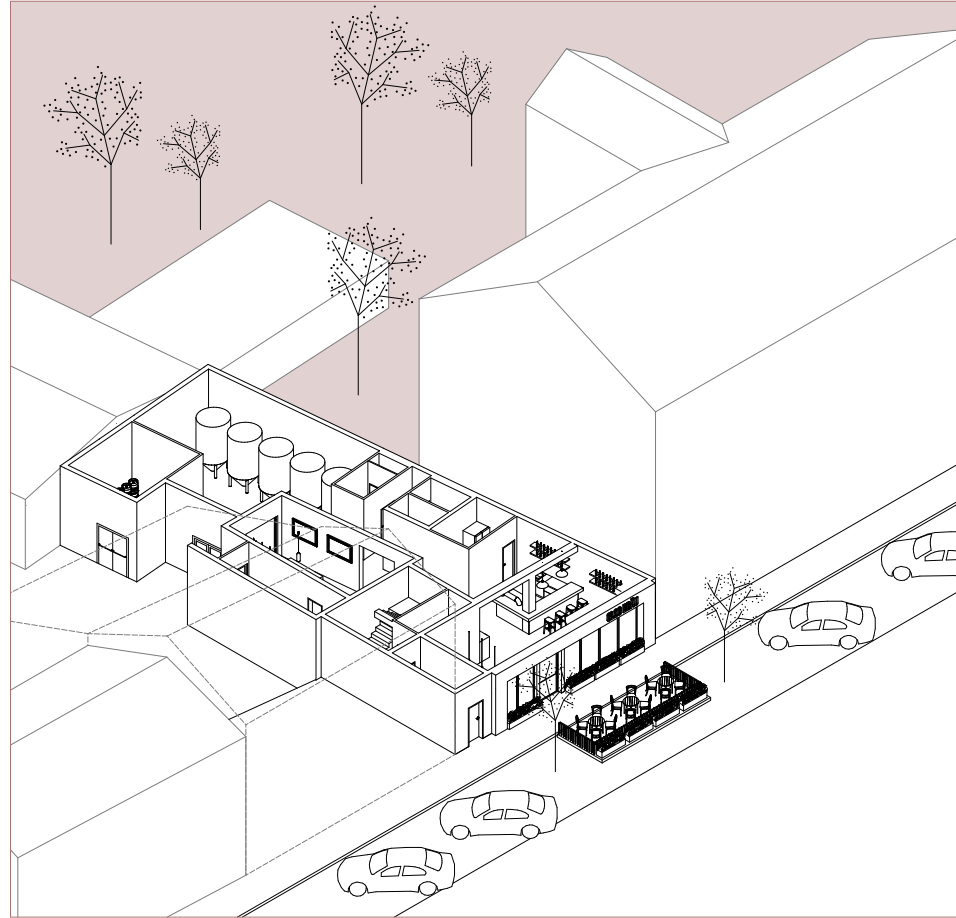
wienerstrasse 26

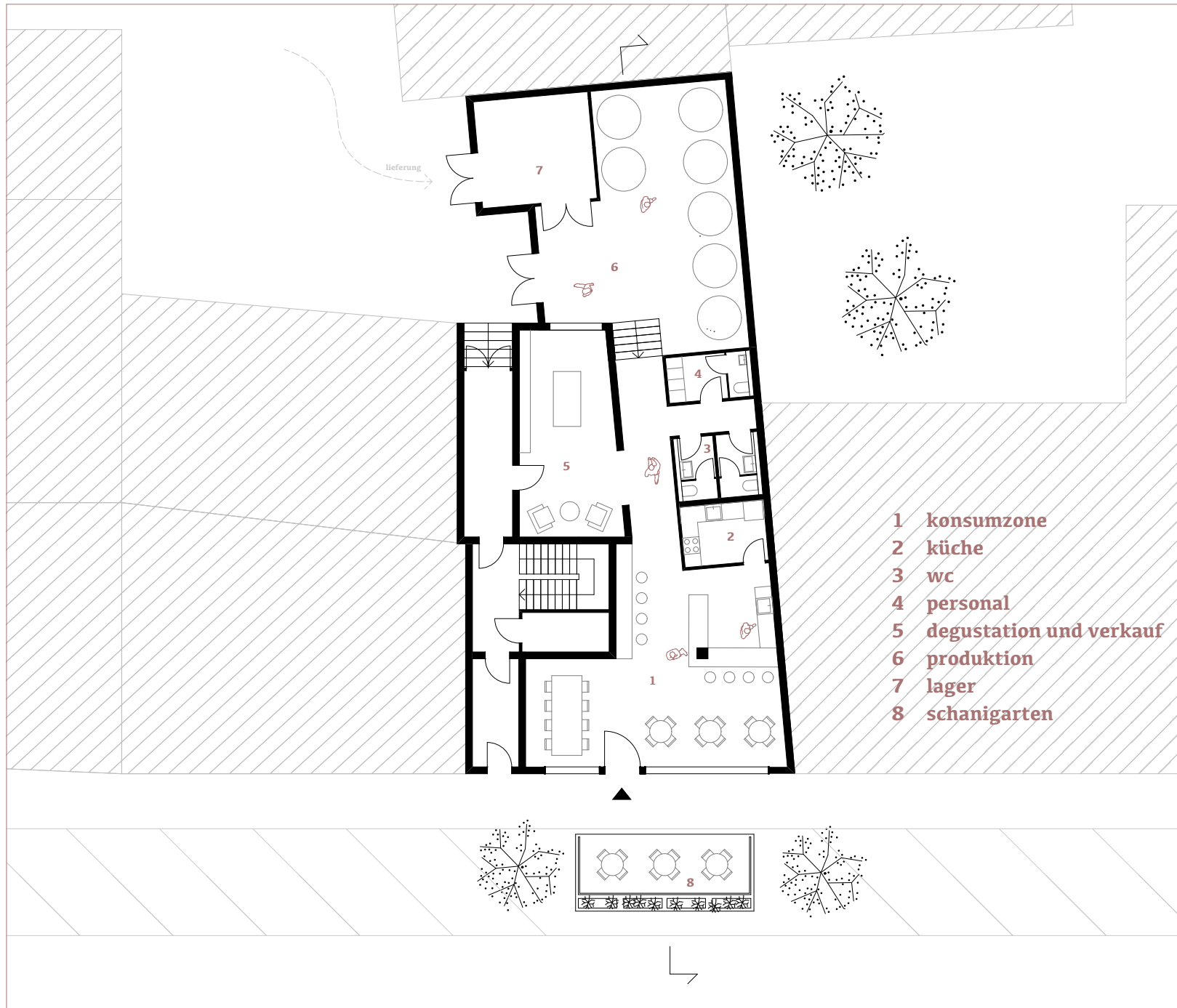


aljosa milosevic



lageplan 1.5000





grundriss 1.200



vorher - nahher



ansicht nord



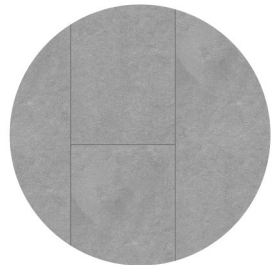




Materialkonzept Innenraum



Terazzo
Boden - Bar



Fliesen Naturstein
Boden - Produktion



Beton
Wand



Mauerwerk
Wand



Vollholz
Möbel / Details

Materialkonzept Fassade



Cortenstahl
Pflanztöpfe



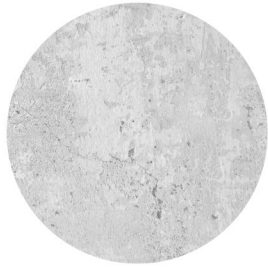
Fasadenpaneele
Fassade



Putz hellgrau
Fassade



Materialreferenzen



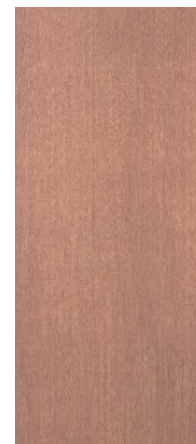
Beton
Wand



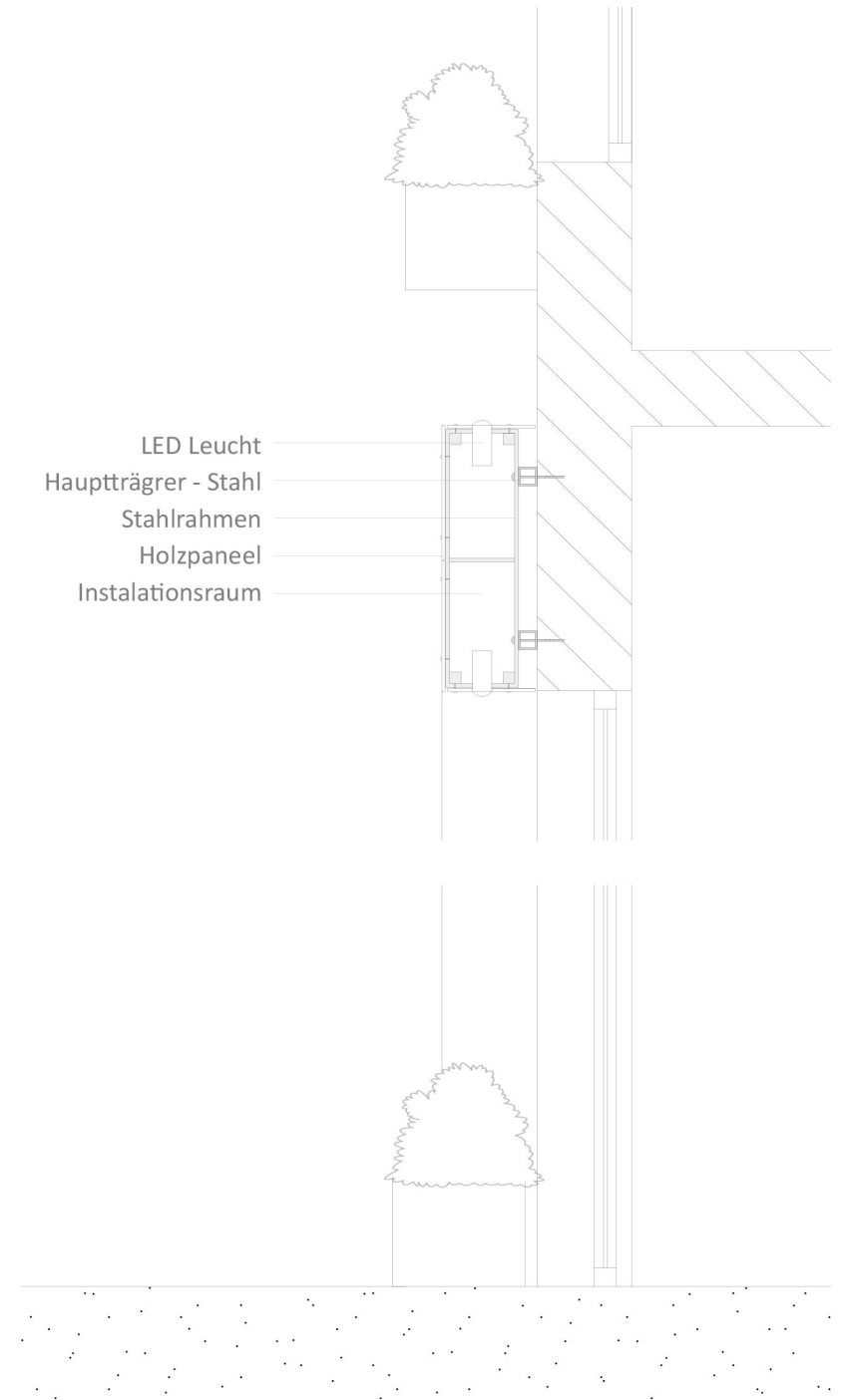
Fasadenpaneele
Fassade



Parklex®



Detail 1:20



Danke für Aufmerksamkeit!

