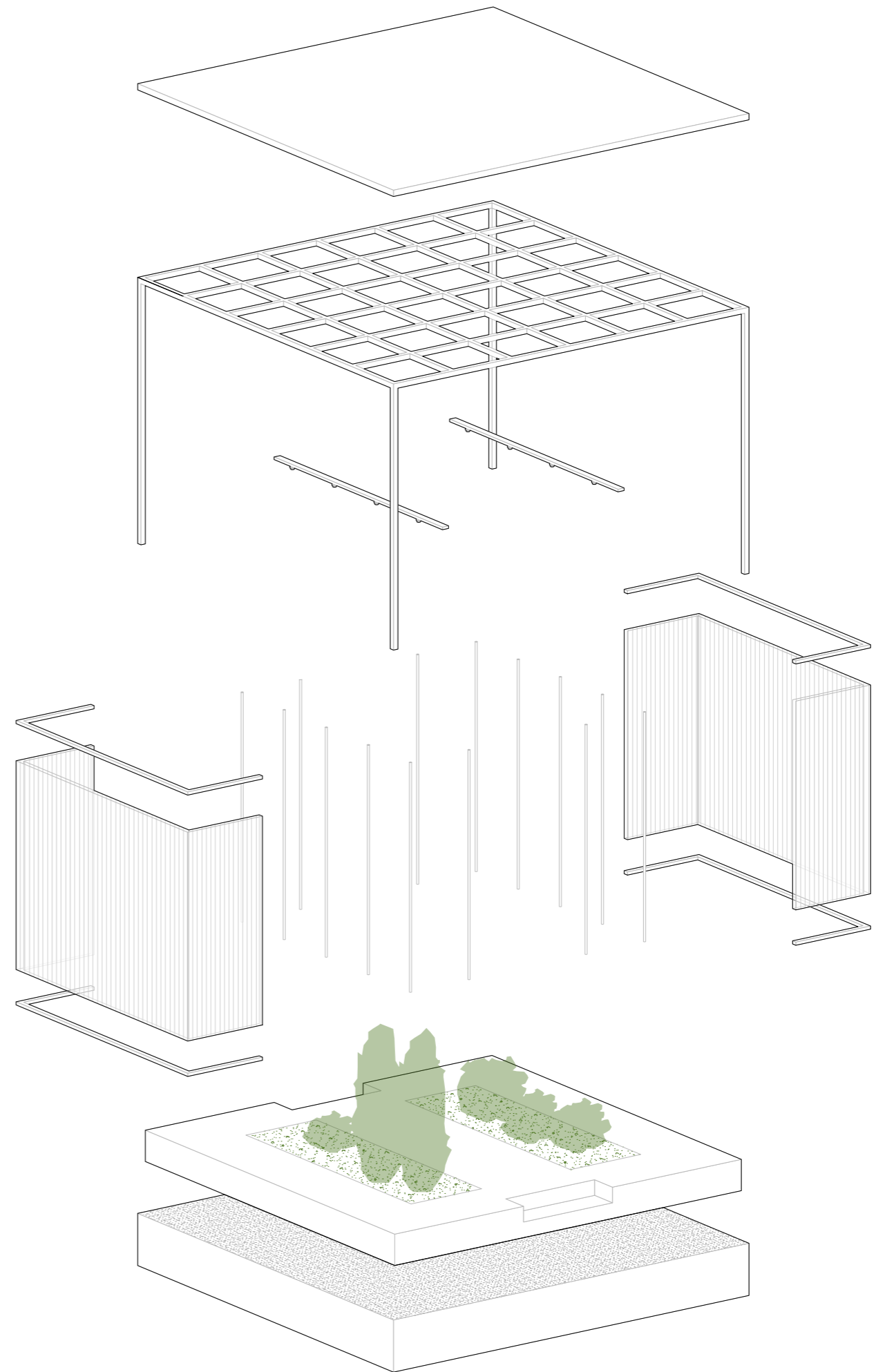
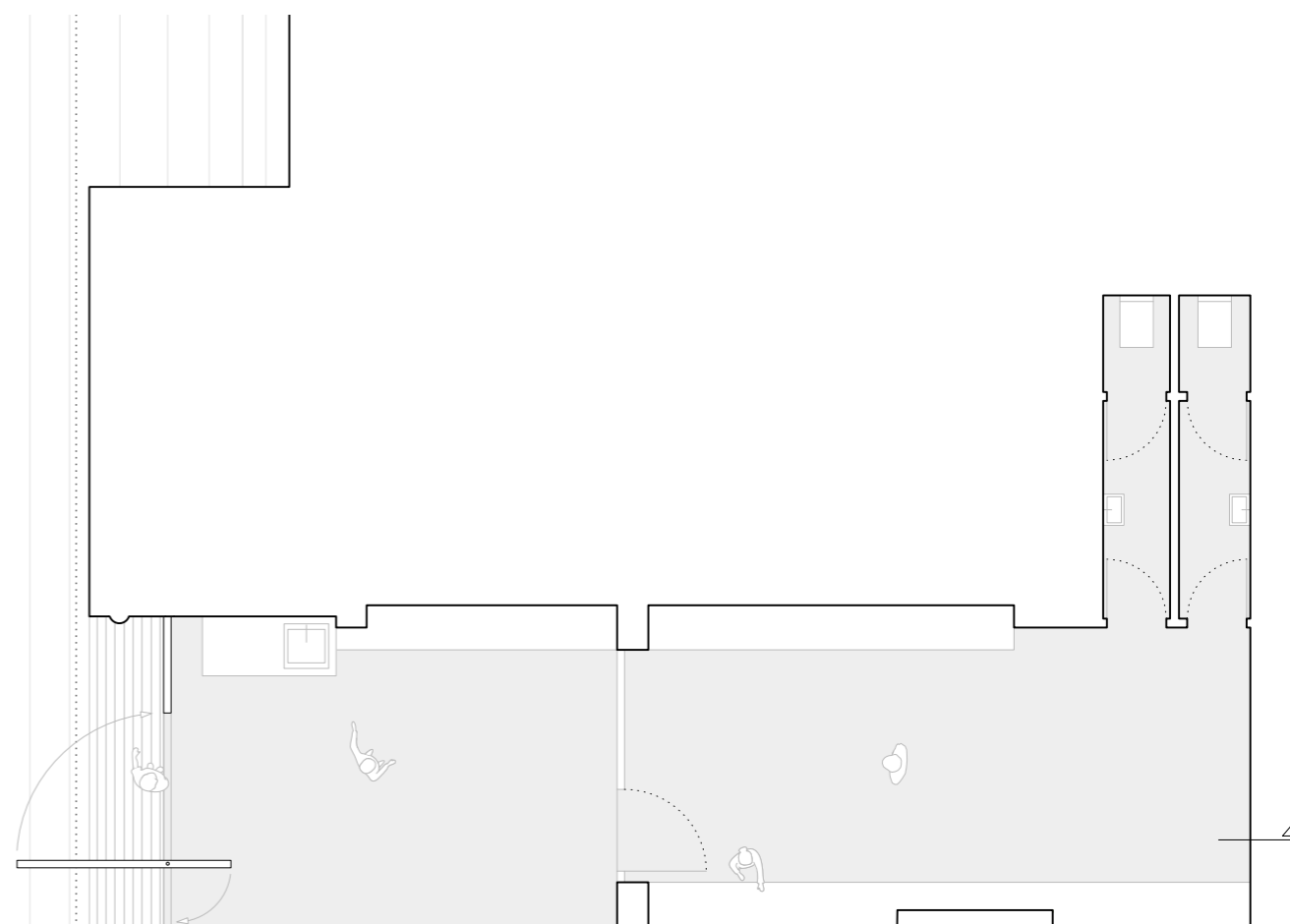
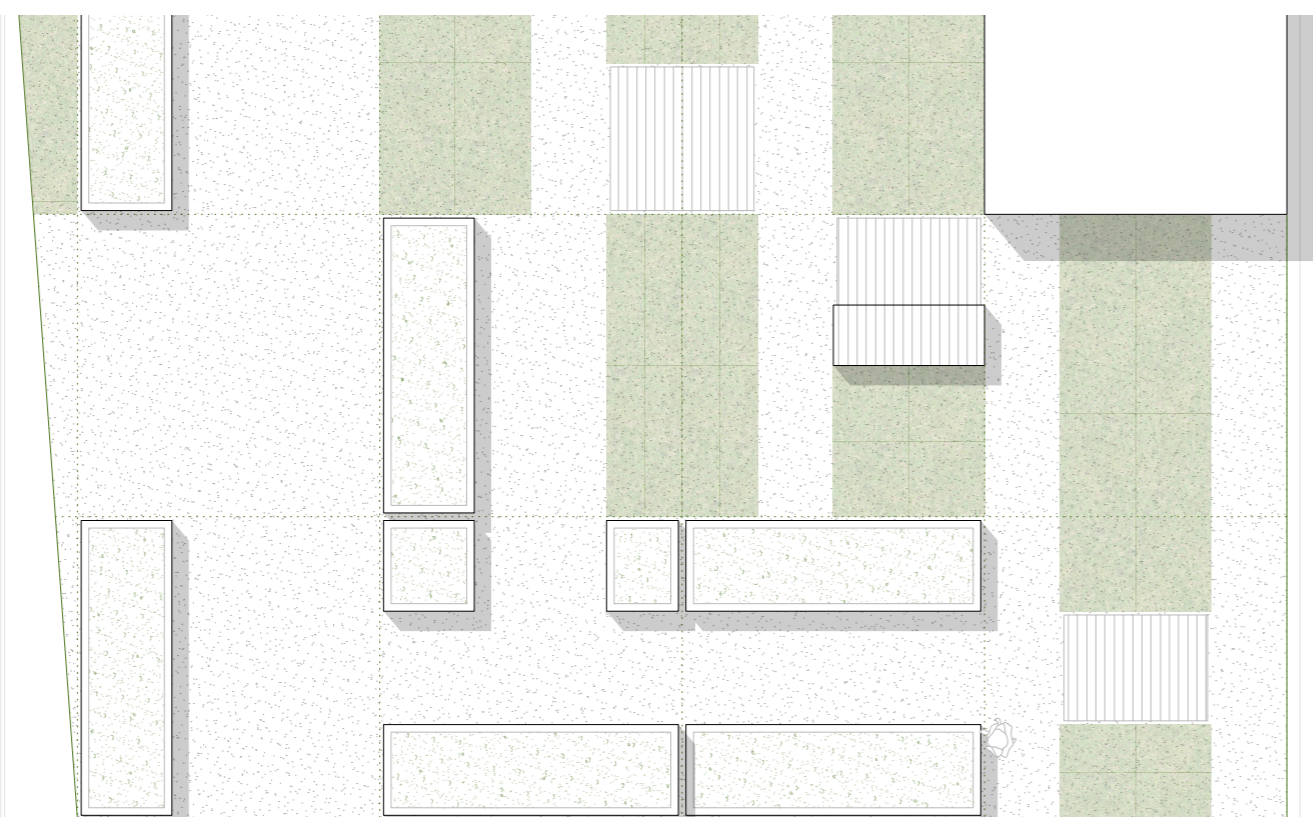


- 1 Trägerrost Stahl 5x5cm
- 2 Polycarbonat 1,6cm
- 3 Aluminiumschiene mit LED-Leuchten
- 4 Stahlblechrahmen
- 5 Betonsockel



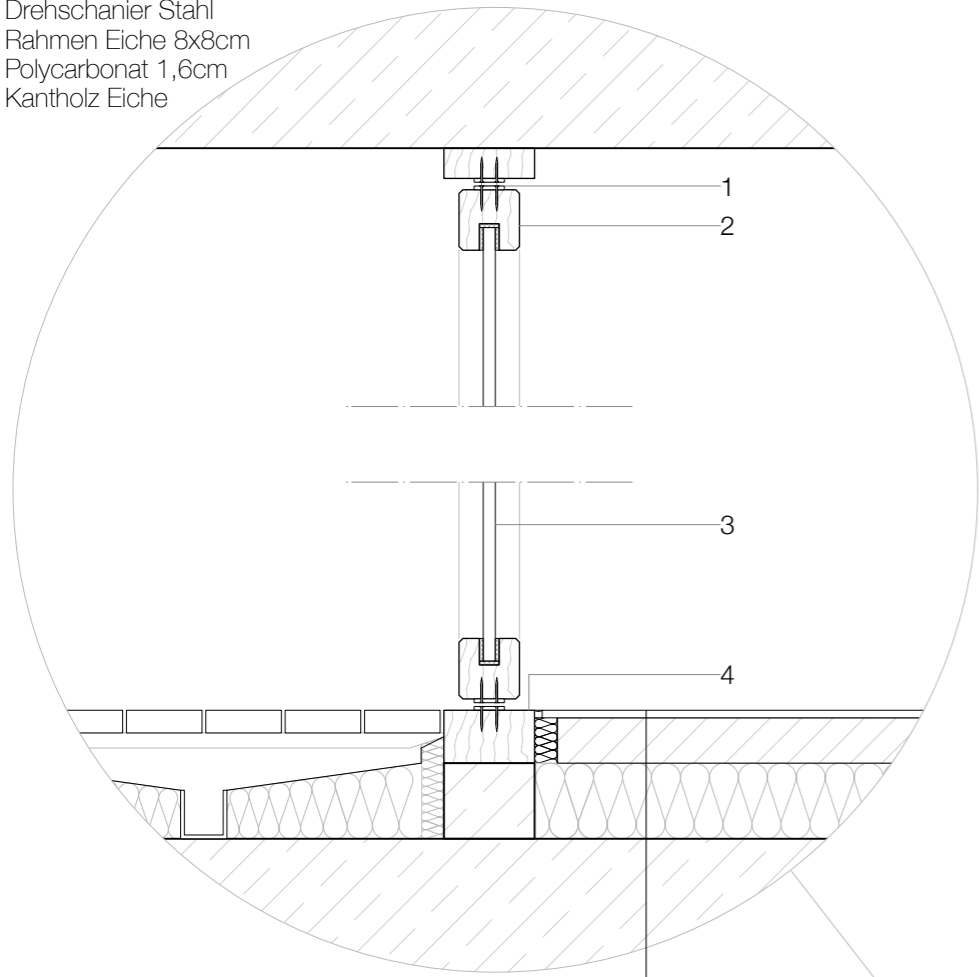


Schnitt Innenraum | M1:100



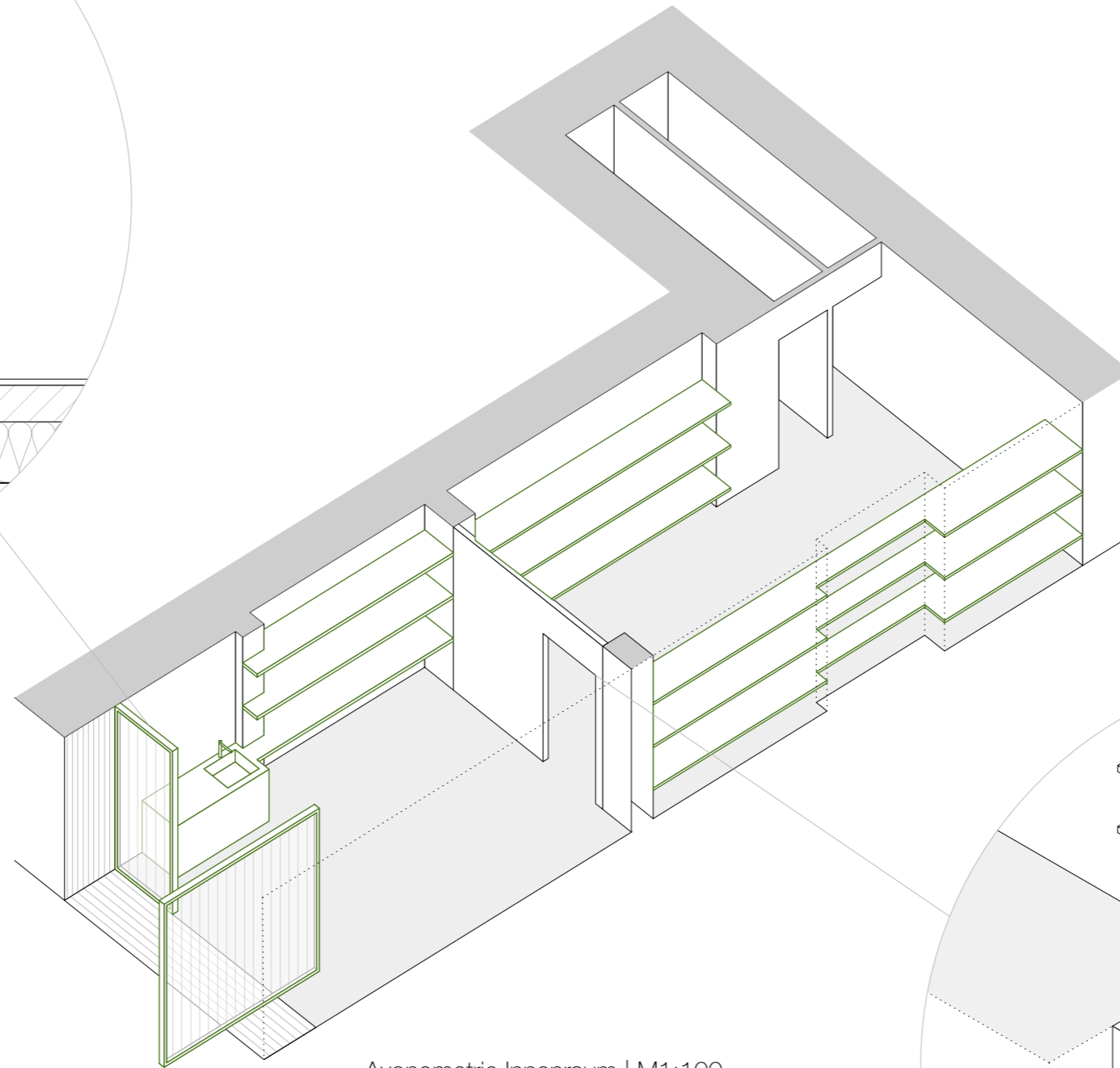
Grundriss Innenraum | M1:100

- 1 Drehscharnier Stahl
- 2 Rahmen Eiche 8x8cm
- 3 Polycarbonat 1,6cm
- 4 Kantholz Eiche

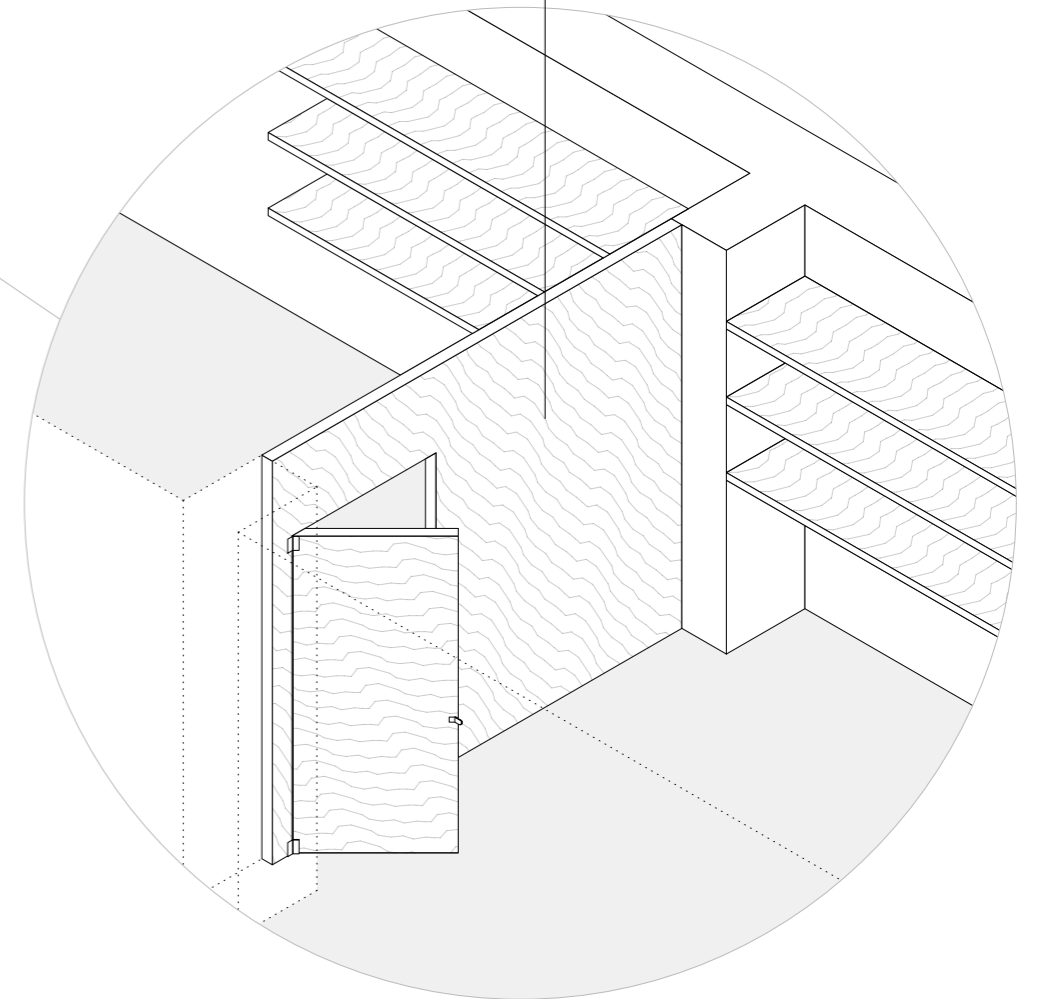


Detail Schwenktür | M1:10

- 1cm geschliffener Estrich
- 6cm Trockenestrich
- 14cm Trittschalldämmung
- Bestandsboden

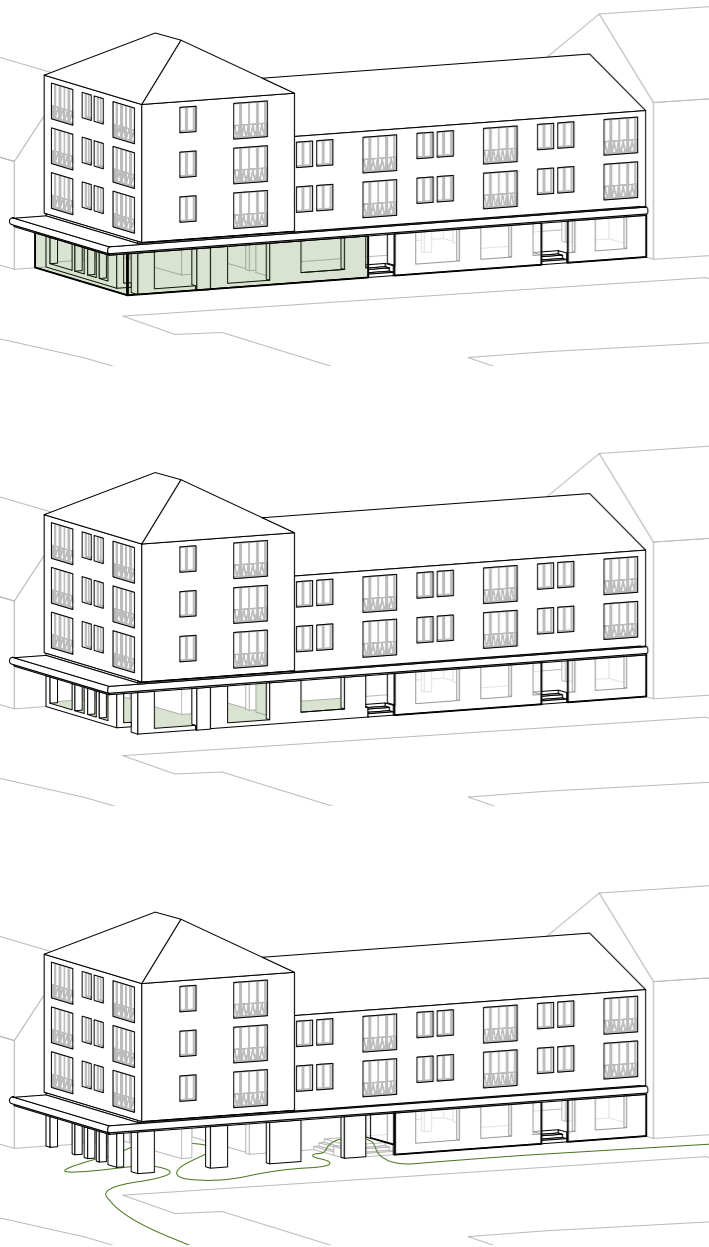


Axonometrie Innenraum | M1:100

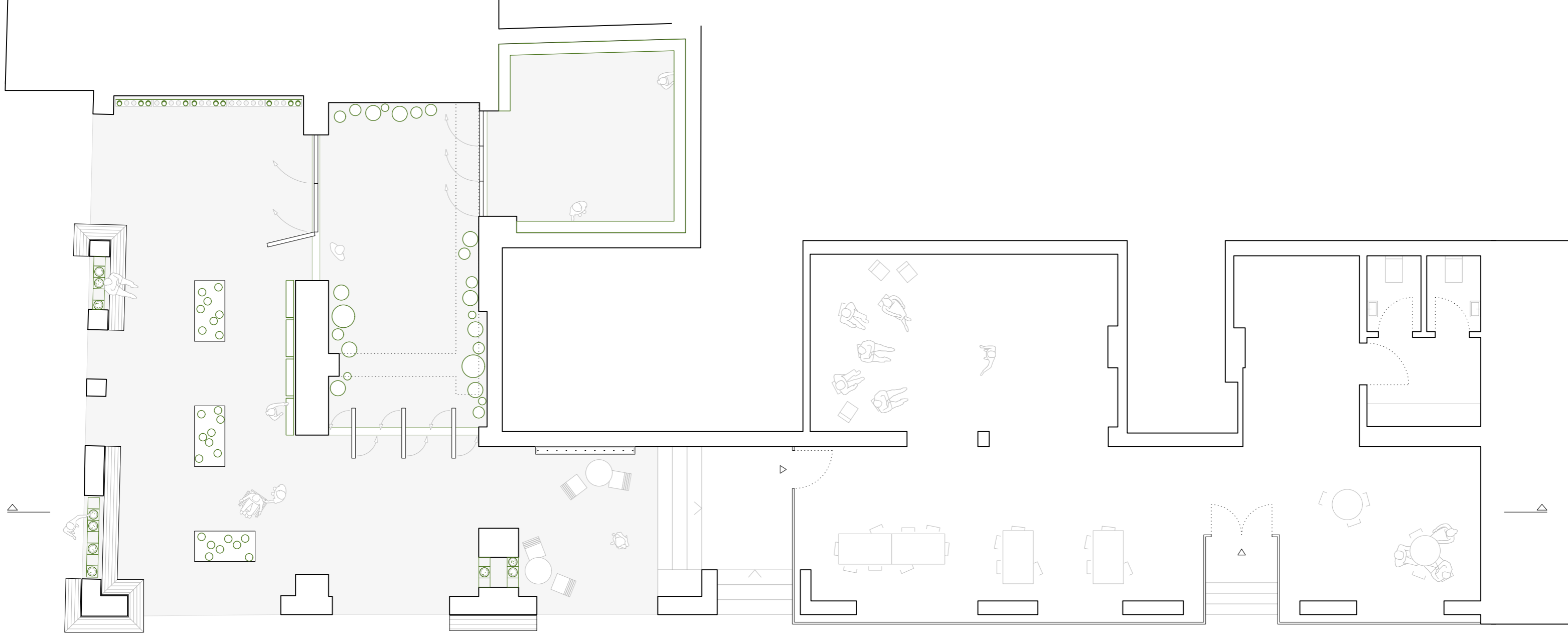


Innenausbau und Möbel
aus OSB-Platten

Axonometrie Trennwand | M1:50



Räumliche Veränderungen



Grundriss Erdgeschoss | M1:100



Längsschnitt | M1:100